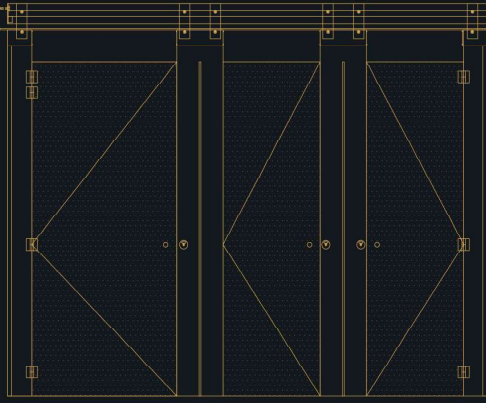




RESTROOM SOLUTIONS

### Ceiling Hung Series



### Ceiling Hung

- Aluminium made top rail concealed within false ceiling
- No bottom support gives rise to floating look
- Up to 2400 mm height including 100 mm bottom gap
- Customised option of 3000 mm height including 10 mm bottom gap
- Box up fixturing at the top for standard dimensions and both at top and bottom for customised dimensions.
- Stainless steel made accessories

Ceiling Mounted

### Athenalite Series



### Athena Lite

- Visible anodized/powder coated aluminium made top rail
- No bottom support gives rise to floating look
- Up to 2105 mm height including 150 mm bottom gap
- Customised option of 2400 mm height including 100 mm bottom gap
- Stainless steel made accessories

Wall Mounted

Titan 18mm Boxup



Titan 12mm Boxup



### Titan 18 mm Box Up

- Top rail is not used
- Box up fixturing at bottom for ground support
- Up to 2100 mm height including 100 mm bottom gap
- Customised option of 2400 mm height including 100 mm bottom gap
- Stainless steel made accessories

### Titan 12 mm Box Up

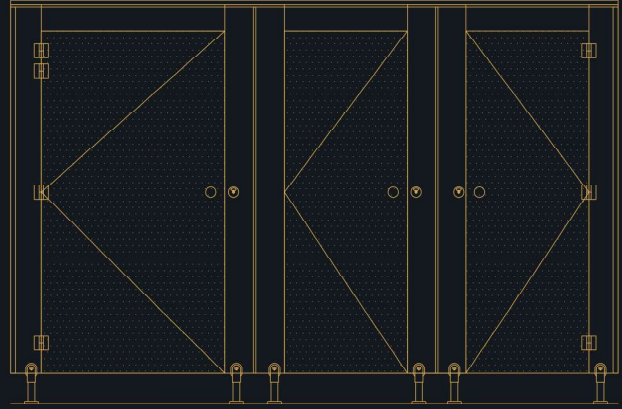
- Square shaped top rail made of stainless steel
- Box up fixturing at bottom for ground support
- Up to 2100 mm height including 100 mm bottom gap
- Customised option of 2400 mm height including 100 mm bottom gap
- Stainless steel made accessories

Floor Mounted

Titan Standard



ZMS Series



### Titan Standard

- Option of stainless steel rectangular top rail or round top rail with clip arrangement
- Ground supported with SS adjustable legs  
With rectangular top rail
- Up to 1980 mm height including 150 mm bottom gap or up to 2100 mm height including 100 - 150 mm bottom gap
- Customised option of 2400 mm height including 100 - 150 mm bottom gap With round top rail
- Up to 2039 mm height including 150 mm bottom gap or up to 2100 mm height including 100 - 150 mm bottom gap
- Customised option of 2400 mm height including 100 - 150 mm bottom gap
- Stainless steel made accessories

### ZMS SS/ZMS Nylon

- Powder coated Aluminium top rail
- Ground supported with stainless steel/Nylon adjustable legs
- Up to 2003 mm height including 150 mm bottom gap
- Customised option of 2100 mm height including 100 - 150 mm bottom gap
- Stainless steel/Nylon PA-6 made accessories

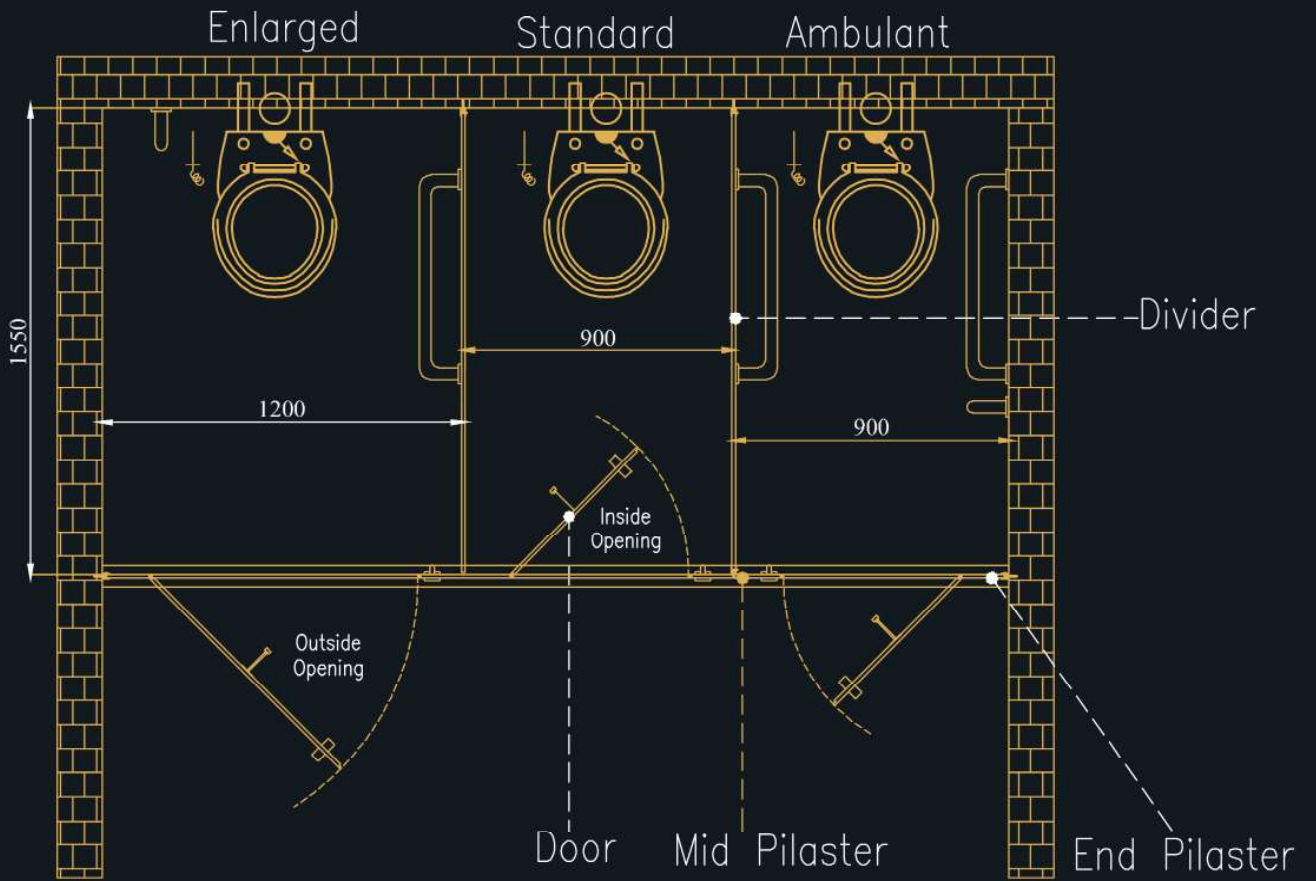
# Ceiling Hung

Aries Imex Ceiling Hung Cubicle series attracts the attention of its users through design and light weighted appearance without compromising on its performance. In this system, nothing sits on the floor, Entire weight of the cubicle is transferred to the ceiling, supported by the box-up fixture. If you want to have the best in its class aesthetics with best in its class functionality, Ceiling Hung model is the choice for you.

Ceiling Hung



**Ceiling Hung Series**



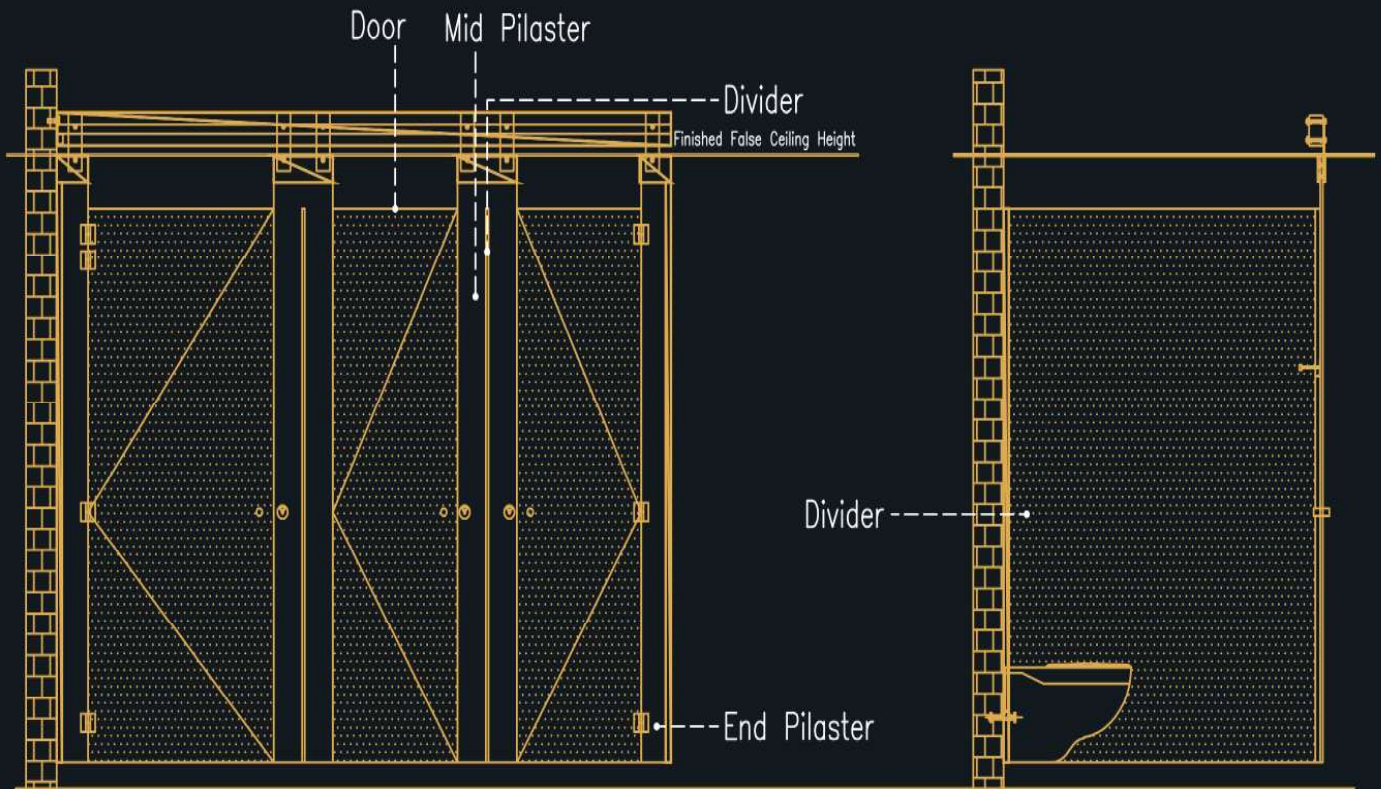
The Ceiling Hung Model in Page No. 09 has been shown with:



14140 (Canterbury oak)



14142 (Auburn Oak)



## Options

- Extensive Range of Colours
- Wood Grains
- Stone Designs
- State of the Art Accessories
- Customisation on Request

## Looks good in



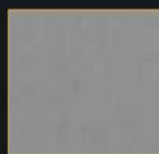
10858



11005



21027



49931

For more colour options, please refer to MRS Shade Chain.

## Description

Size of Cubicle	900 mm (W) X 1.550 mm (D) X 2400 mm (H)
The recommended restroom cubicle size	900-1000 mm X 1.500-1.800 mm X 2400-3000 mm (W x D x H)
Visible height of restroom compartment measured from FFL to false ceiling	2400 mm (Including bottom gap of 100 mm)
Door width	600 mm
Customised Overall Height Of Cubicle	3000 mm (Including bottom Gap of 10 mm)

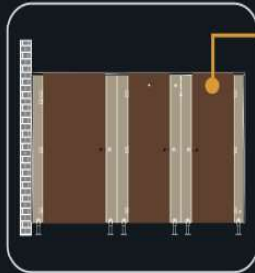


Routing on the door



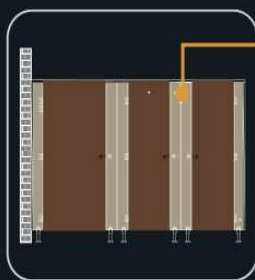
Box up fixtures attached to ceiling





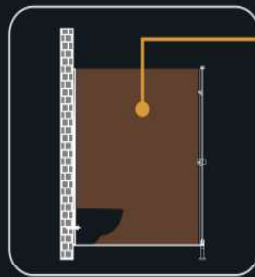
## Doors

All doors will be of single colour and made of 18 mm thick Merino HPL compact panel. The doors will have chamfered edges. Each door will be supported by 3 stainless steel made hinges affixed to the pilasters. Stainless steel made coat hook and lock set are provided with each door. All the doors will be routed at the vertical ends and the rubber sponge lining will be incorporated at the routed ends.



## Pilasters

All pilasters will be made of 18 mm thick Merino HPL compact panel. The pilasters are affixed to the mild steel rectangular plates (250 mm x 75 mm x 6 mm) and the plates are in turn fixed with the top rail. The assembled parts will be concealed by the stainless steel made box up fixture. The pilasters will be routed at their vertical ends to facilitate proper closure of doors. The visible height from finished floor level to false ceiling is 2400 mm including a floor clearance of 100 mm.



## Intermediate Partitions or Dividers

All intermediate partitions or dividers will be made of 12 mm thick Merino HPL compact laminate panels. They are affixed with stainless steel made U-channel at their vertical ends for ultimate stability of the system.



## Hardware and accessories

Each restroom cubicle of Ceiling Hung model will be equipped with following hardware and accessories:

- Top Rail: Heavy-duty aluminium made Channel, 125 mm x 70 mm x 5 mm (cross-section dimension, L x W x Thk), acting as top rail, will be secured to the wall using steel made wall bracket.
- Stainless steel made thumb turn lock set with occupancy indicator, stainless steel made coat hook which can carry load up to 25kg, stainless steel made hinges with cover, adjustable from fully close to open at any angle, stainless steel made box up structure with the height of 100 mm.

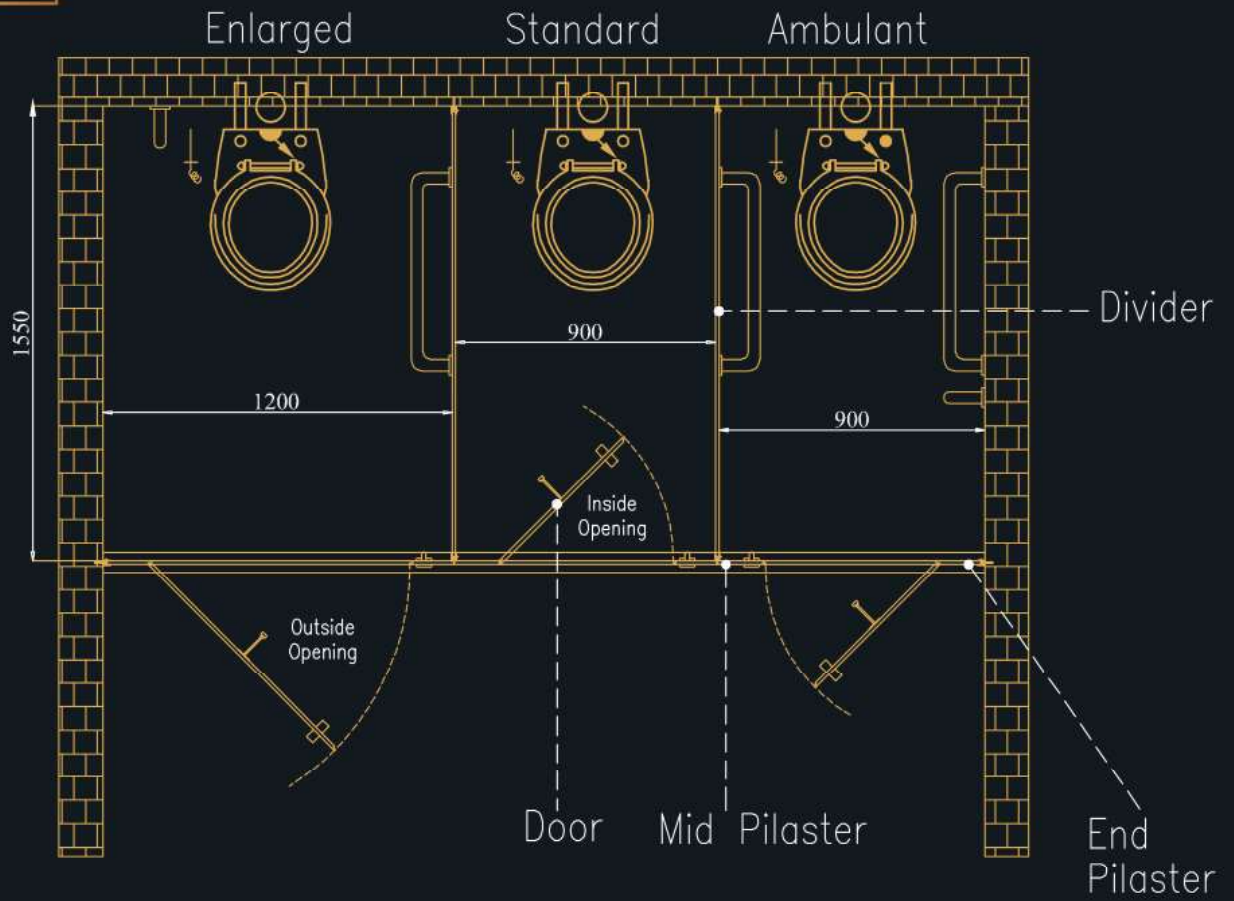
# Athena Lite

In contemporary world of fashion, large frames and bulky designs are passe. Today "thin is in". World over designers are lining up slimmer and thinner design ideas. we bring to you Athena Lite. A revolutionary design idea in the league of free floor system which is lighter, slimmer and cleaner. The sleek and clean look of Athena Cubicles exude the feel of lightness and elegance in the restroom, making you stay in the area more pleasant.

Athena Lite



**Athena Lite  
Series**



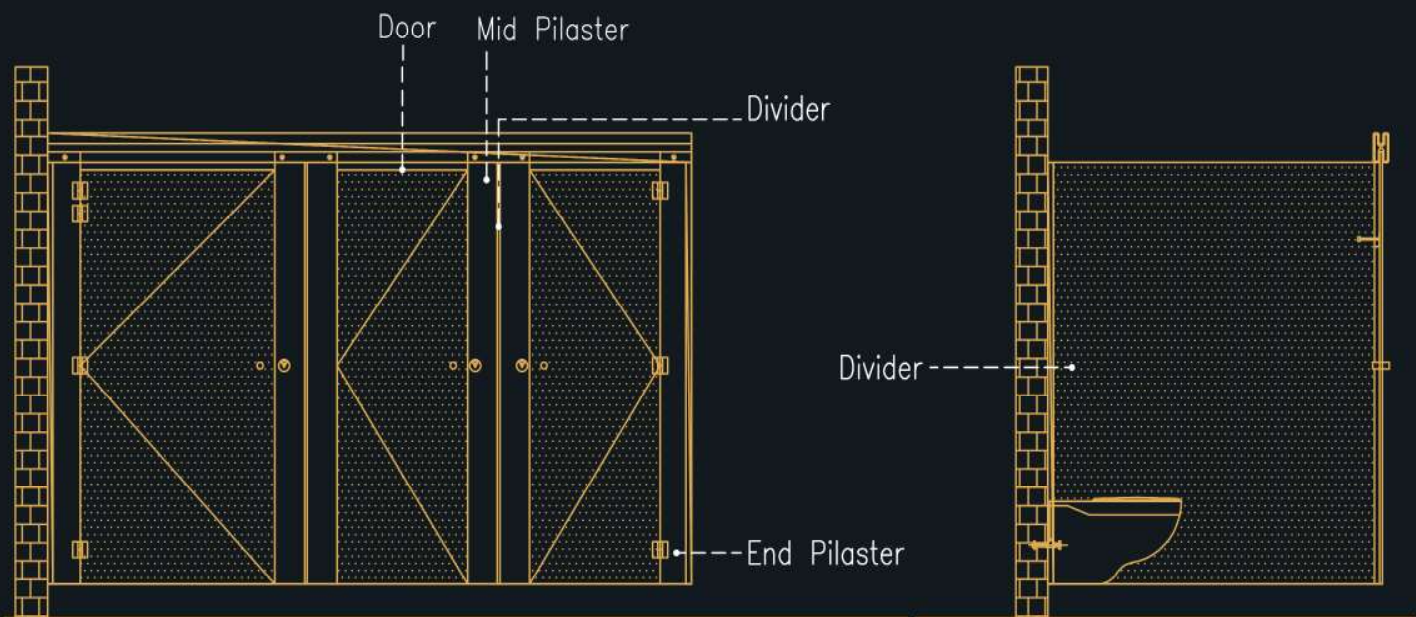
The Anthena Lite Model in Page No. 17 has been shown with:



49931 (Alumina Pearl)



40258 (Black Granite)



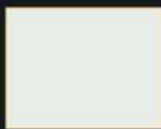
## Options

- Extensive Range of Colours
- Wood Grains
- Stone Designs
- State of the Art Accessories
- Customisation on Request

## Looks good in



10858



22091



22099



49931

## Description

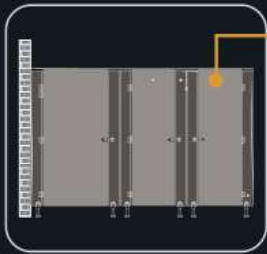
Size of Cubicle	900 mm (W) x 1550 mm (D) x 2105 mm (H)
The recommended restroom cubicle size	900-1000 mm X 1500-1800 mm X 2105- 2400 mm (W x D x H)
Height of restroom Cubicle or compartment measured from top of Wall Fixing	2105 mm (Including bottom gap of 150 mm)
Door width	600 mm
Customised Overall Height Of Cubicle	2400 mm (Including bottom gap of 100 mm)



Anodized top Rail

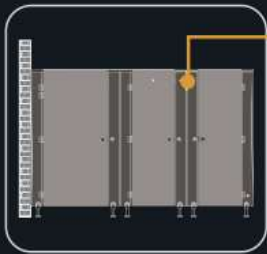


Door knob and occupancy indicator



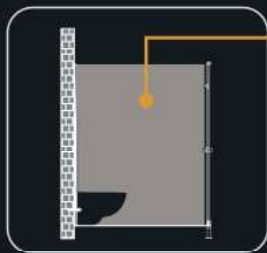
## Doors

All doors will be of single colour and made of 12 mm thick Merino HPL compact panel. The doors will have chamfered edges. Each door will be supported by 3 stainless steel made hinges affixed to the pilasters. Stainless steel made coat hook and lock set are provided with each door. All the doors will be routed at the vertical ends and the rubber sponge lining will be incorporated at the routed ends.



## Pilasters

All pilasters will be made of 12 mm thick Merino HPL compact panel with chamfered edge and completed with stainless steel made thumb turn lock set. Pilasters are slotted and affixed to the top rail. They are secured from the top of the top rail. The bottom gap is 150 mm.



## Intermediate Partitions or Dividers

All intermediate partitions or dividers will be made of 12 mm thick Merino HPL compact laminate panels. They are affixed with Aluminum made U-channel at their vertical ends for ultimate stability of the system.



## Hardware and accessories

Each restroom cubicle of Athena Lite model will be equipped with following hardware and accessories:

- Top Rail: Heavy duty Aluminium made top rail of dimension 125 mm (cross-section dimension, L x W x Thk), acting as top rail and will be secure to the wall using steel bracket to the wall using steel made Wall Bracket.
- Stainless steel made thumb turn Lock Set with occupancy indicator, stainless steel made Coat Hook which can carry load up to load up to 25kg, stainless steel made Hinges with cover, adjustable from fully close to open at any angle.

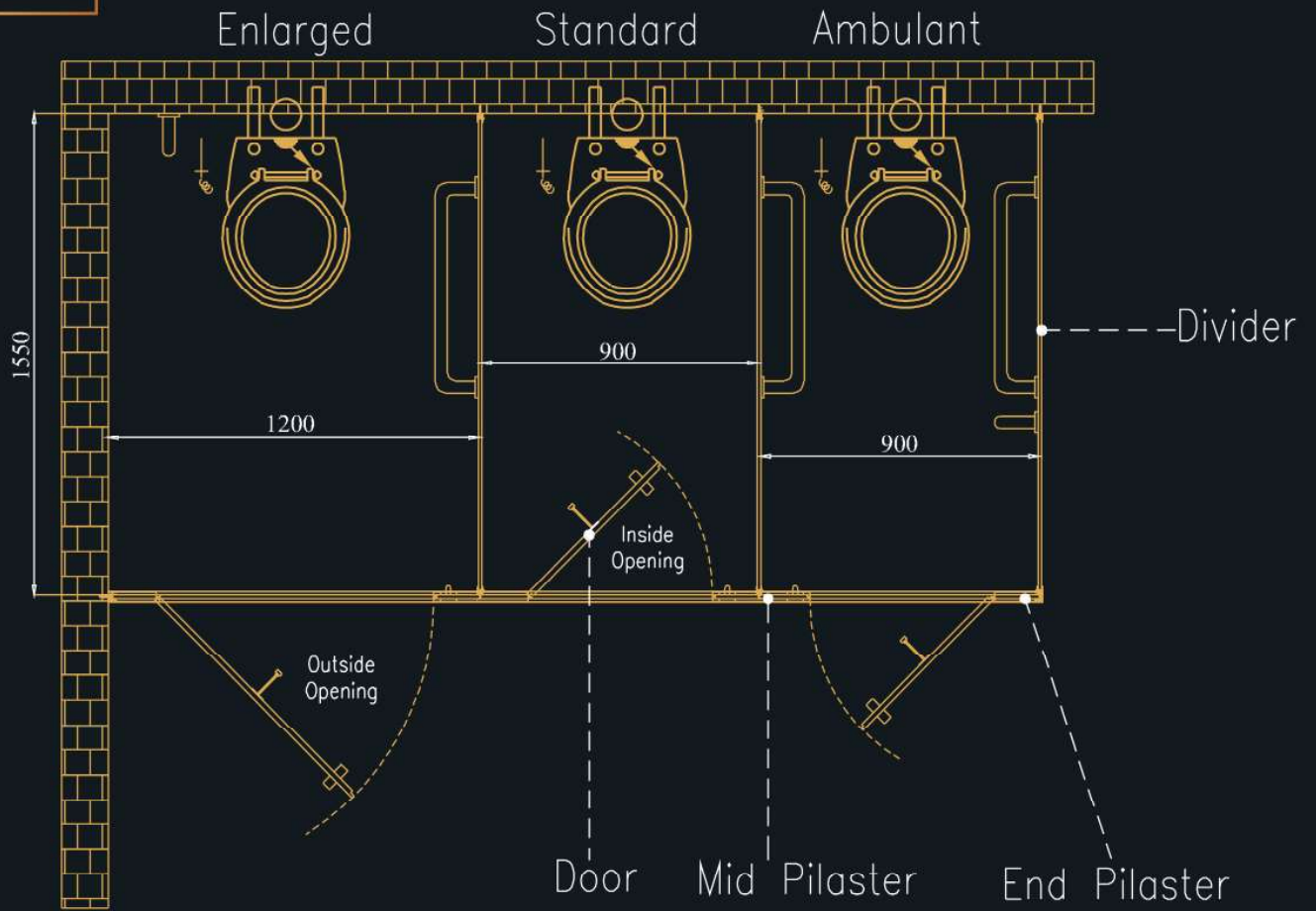
## Titan 18 mm Box up

When a Clean line design is required in restrooms, the Titan 18mm Box Up model is the most appropriate choice. This design eliminates the use of top rail as it uses 18mm pilasters and doors. Height adjustments are hidden inside the stainless-steel hinges, locks and hardware. This model is popular in stadiums all across the world as it is one of the sturdiest.

Titan 18 mm Box Up



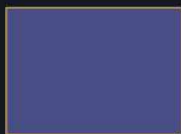
**Titan 18 mm  
Box up**



The Titan 18mm Box up Model in Page No. 25 has been shown with:

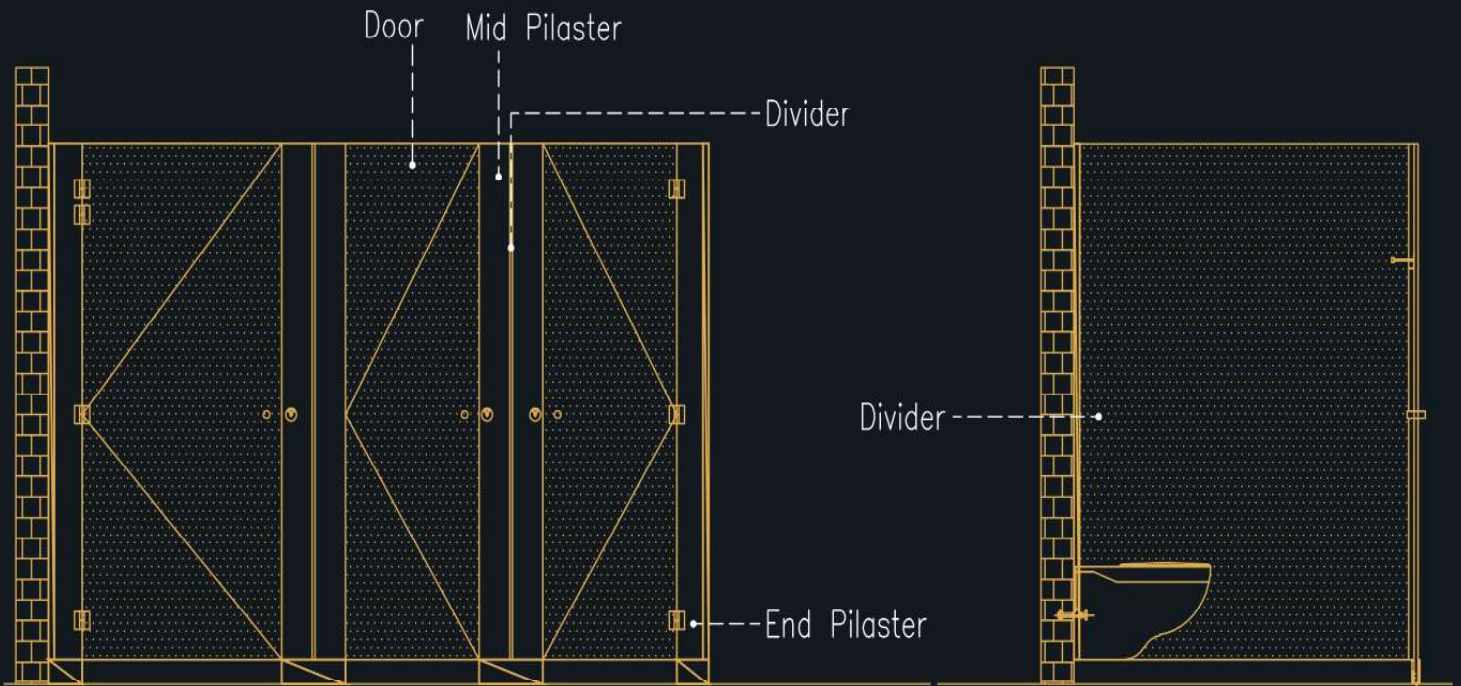


40261 (Calacatta Marble)



21142 (Polar Blue)





## Options

- Extensive Range of Colours
- Wood Grains
- Stone Designs
- State of the Art Accessories
- Customisation on Request

## Looks good in



11005



21019



21187



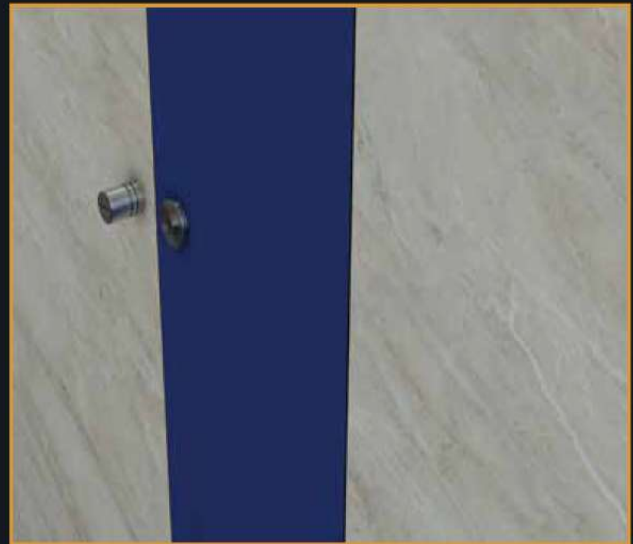
49931

## Description

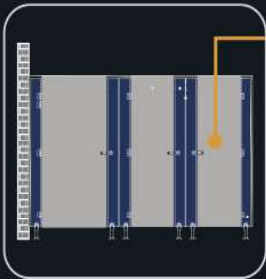
Size of Cubicle	900 mm (W) X 1550 mm (D) X 2100 mm (H)
The recommended restroom cubicle size	900-1000 mm X 1500-1800 mm X 2100-2400 mm (W x D x H)
Height of restroom compartment measured from top of the pilaster	2100 mm (Including bottom gap of 100 mm)
Door width	600 mm
Overall Height Of Cubicle	2100 mm (Including bottom Gap of 100mm)
Customised Overall Height Of Cubicle	2400 mm (Including bottom gap of 100 mm)*



Box up fixtures on the floor

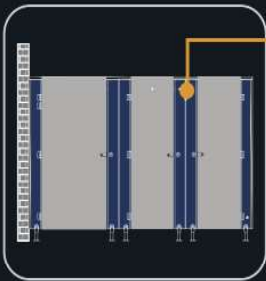


Door Knob and Occupancy Indicator



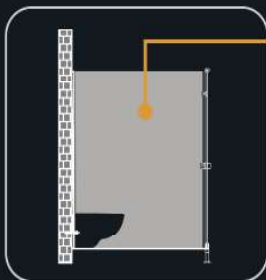
## Doors

All doors will be of single colour and made of 18 mm thick Merino HPL compact panel. The doors will have chamfered edges. Each door will be supported by 3 stainless steel made hinges affixed to the pilasters. Stainless steel made coat hook and lock set are provided with each door. All the doors will be routed at the vertical ends and the rubber sponge lining will be incorporated at the routed ends.



## Pilasters

All pilasters will be made of 18 mm thick Merino HPL compact panel with chamfered edge and completed with stainless steel made thumb turn lock set. Pilasters will be anchored to the floor using steel made L brackets and box up fixtures are used for covering the floor anchored mechanism. All pilasters will be routed at their vertical ends to facilitate closure of doors. The bottom gap is 100 mm.



## Intermediate Partitions or Dividers

All intermediate partitions or dividers will be made of 18 mm thick Merino HPL compact laminate panels. They are affixed with stainless steel made U-channel at their vertical ends for ultimate stability of the system.



## Hardware and accessories

Each restroom cubicle of Titan 18 mm Box Up model will be equipped with following hardware and accessories:

- ◆ Stainless steel made Door Knob with anti-slip groove. stainless steel made thumb turn lock set with occupancy indicator. Stainless steel made Coat Hook with rubber stopper comes with/without cover which can carry load up to 25kg. Stainless steel Hinges with cover, adjustable from fully close to open at interval of 15°. Stainless steel made box up fixture with height 100 mm and brushed finish.

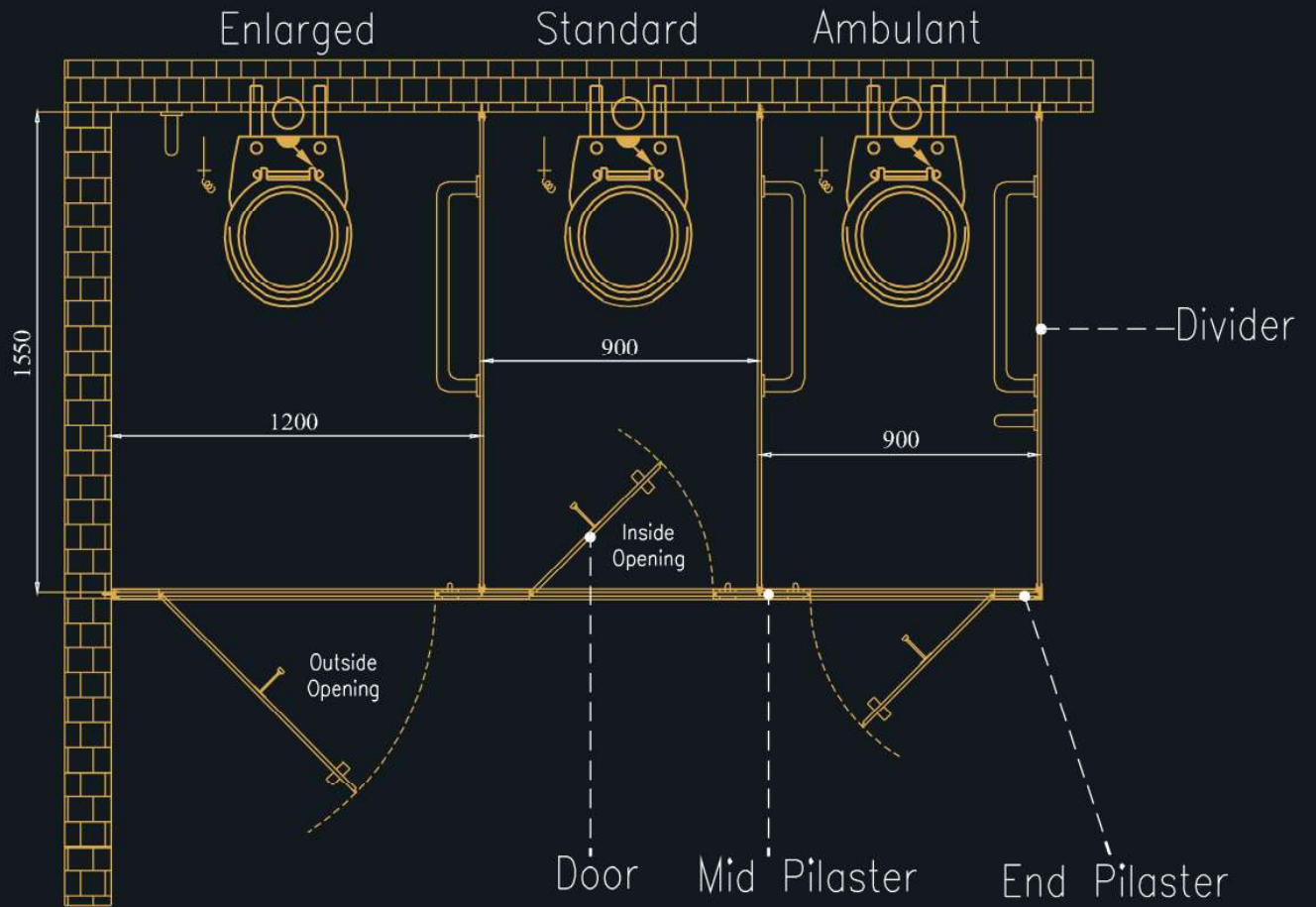
## Titan 12 mm Box up

When the ambiance calls for elegance, the Titan 12mm Box Up model is perfect solution. This model comes equipped with stainless steel made top rail arrangement which adds extra strength to the system along with the breathtaking look & feel.

Titan 12 mm Box Up



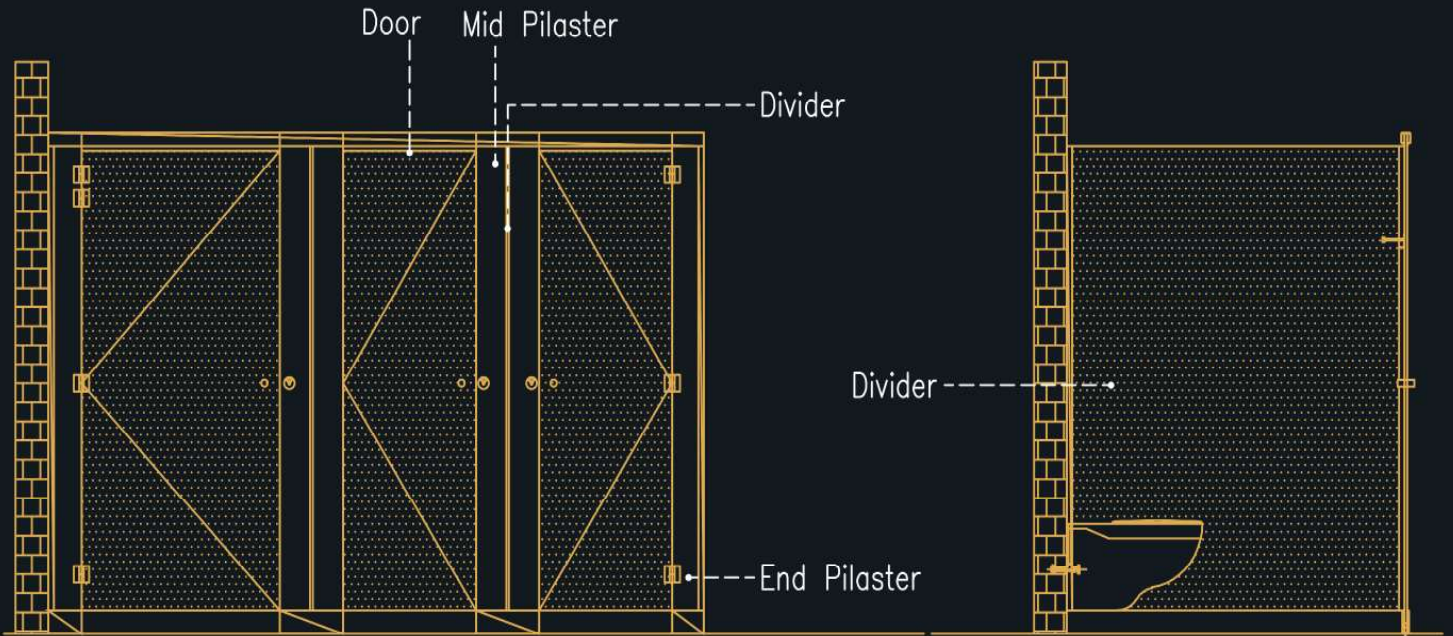
**Titan 12 mm  
Box up**



The Titan 12mm Box up Model in Page No. 33 has been shown with:



11005 (Neo Highland Pine) 40294 (Caldera Marble)



## Options

- Extensive Range of Colours
- Wood Grains
- Stone Designs
- State of the Art Accessories
- Customisation on Request

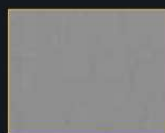
## Looks good in



11005



21019



49931



21187

## Description

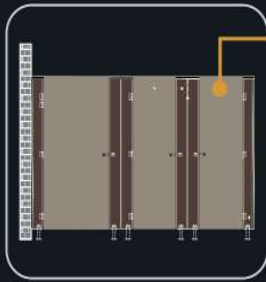
Size of Cubicle	900 mm (W) X 1550 mm (D) X 2100 mm (H)
The recommended restroom cubicle size	900- 1000 mm X 1500-1800 mm X 2100-2400 mm (W x D x H)
Height of restroom compartment measured from top of the pilaster	2100 mm (including bottom gap of 100 mm)
Door width	600 mm
Overall Height Of Cubicle	2100 mm (Including bottom Gap of 100 mm)
Customised Overall Height Of Cubicle	2400 mm (Including bottom gap of 100 mm)



Door knob and occupancy indicator

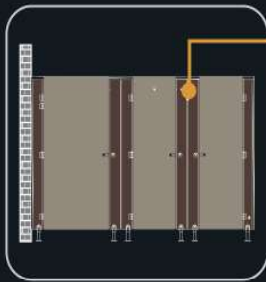


Box up fixtures on the floor



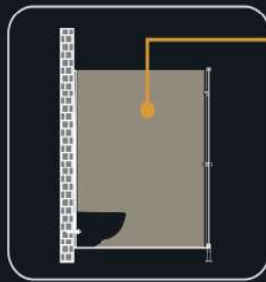
## Doors

All doors will be of single colour and made of 12 mm thick Merino HPL compact panel. The doors will have chamfered edges. Each door will be supported by 3 stainless steel made hinges affixed to the pilasters. Stainless steel made coat hook and lock set are provided with each door. All the doors will be routed at the vertical ends and the rubber sponge lining will be incorporated at the routed ends.



## Pilasters

All pilasters will be made of 12 mm thick Merino HPL compact panel with chamfered edge and completed with stainless steel made thumb turn lock set. Pilasters will be anchored to the floor using steel made L brackets and box up fixtures are used for covering the floor anchored mechanism. All pilasters will be routed at their vertical ends to facilitate closure of doors. The bottom gap is 100 mm.



## Intermediate Partitions or Dividers

All intermediate partitions or dividers will be made of 12 mm thick Merino HPL compact laminate panels. They are affixed with stainless steel made U-channel at their vertical ends for ultimate stability of the system.



## Hardware and accessories

Each restroom cubicle of Titan 12 mm Box Up model will be equipped with following hardware and accessories:

- Top Rail: Stainless steel made top rail with rectangular cross section with or without end cap.
- Stainless steel made Door Knob with anti-slip groove. Stainless steel made thumb turn lock set with occupancy indicator. Stainless steel made Coat Hook with rubber stopper comes with/without cover which can carry load up to 25kg. Stainless steel made Hinges with cover, adjustable from fully close to open at interval of 15°. Stainless steel made box up fixture with height 100 mm and brushed finish.



## Titan Standard

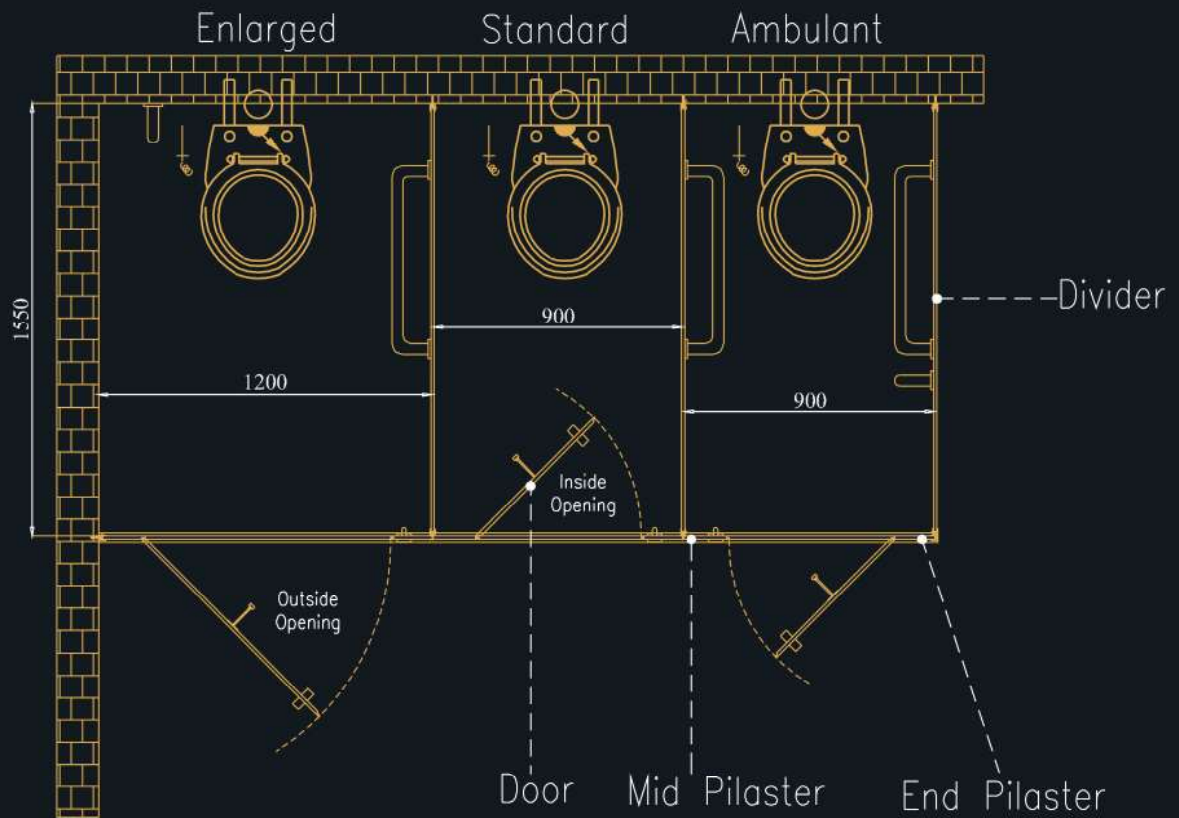
Perfection in look and perfection in functionality have made Titan Standard model one of the most desired restroom cubicle solution in Indian Market. Sleek design and mazing ease of maintenance are the hallmark of this model. Titan Standard model comes with two options of stainless steel made top rails- the rectangular one and the round one. The stainless steel made top rails and other stainless steel made accessories coupled with flush closing of door give this model extremely elegant look and every rich functionality.

### TITAN STANDARD



With rectangular SS top rail

**Titan  
Standard**



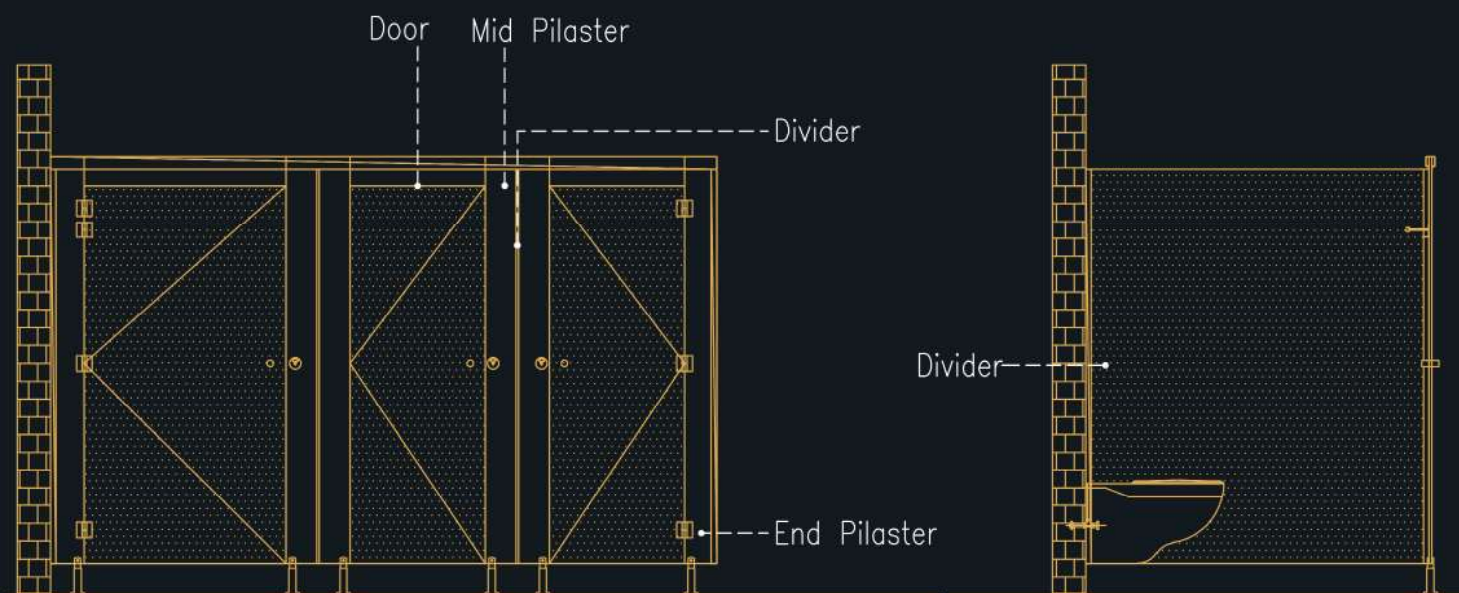
The Titan Standard Model on Page No. 41 has been shown with:



22113 (Fern Green)



22099 (Slate)



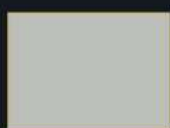
## Options

- Extensive Range of Colours
- Wood Grains
- Stone Designs
- State of the Art Accessories
- Customisation on Request

## Looks good in



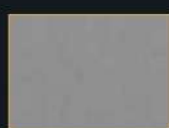
11005



21019



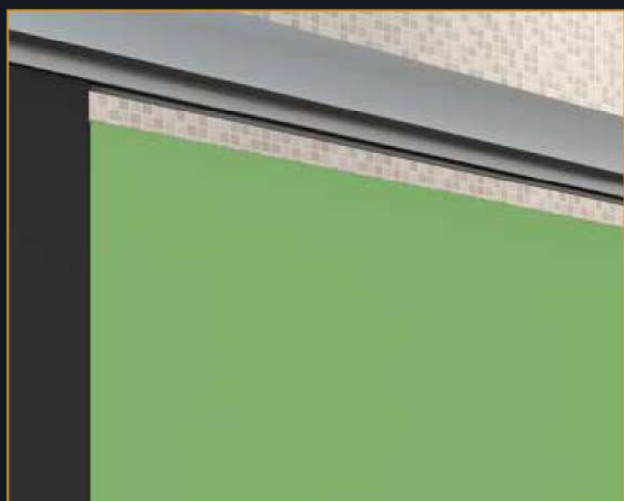
21187



49931

## Description

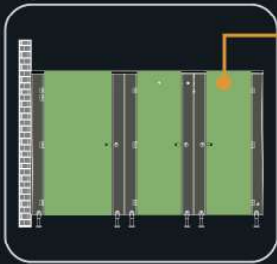
Size of Cubicle	900mm (W) X 1550 mm (D) X 1980 mm (H)
The recommended restroom cubicle size	900-1000 mm X 1500-1800 mm X 1980-2400 mm (W x D x H)
Height of restroom compartment measured from top of the pilaster	1980 mm (including bottom gap of 150 mm)
Door width	600 mm
Option 1: Overall Height of Cubicle :	1980 mm (including bottom gap of 150 mm)
Option 2: Overall Height of Cubicle :	2100 mm (including bottom gap of 100-150 mm)
Customised Overall Height of Cubicle	2400 mm (including bottom gap of 100-150 mm)



SS rectangular top rail

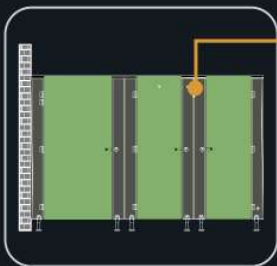


SS adjustable legs



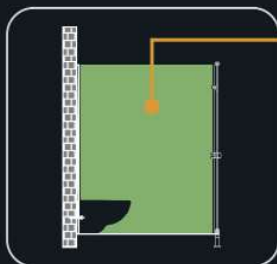
## Doors

All doors will be of single colour and made of 12 mm thick Merino HPL compact panel. The doors will have chamfered edges. Each door will be supported by 3 stainless steel made hinges affixed to the pilasters. Stainless steel made coat hook and lock set are provided with each door. All the doors will be routed at the vertical ends and the rubber sponge lining will be incorporated at the routed ends.



## Pilasters

All pilasters will be made of 12 mm thick Merino HPL compact panel with chamfered edge and completed with stainless steel made thumb turn lock set. Pilasters will be anchored to the floor using stainless steel made adjustable legs. All pilasters will be routed at their vertical ends to facilitate closure of doors. The bottom gap is 100-150 mm.



## Intermediate Partitions or Dividers

All intermediate partitions or dividers will be made of 12 mm thick Merino HPL compact laminate panels. They are affixed with stainless steel made U-channel at their vertical ends for ultimate stability of the system.



## Hardware and accessories

Each restroom cubicle of Titan Standard (with rectangular top rail) will be equipped with following hardware and accessories:

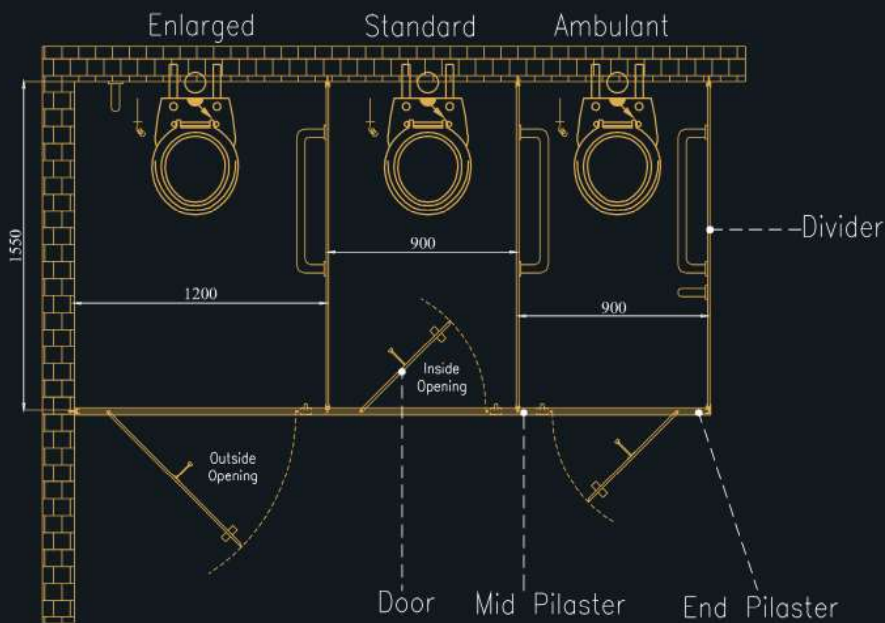
- Top Rail: Stainless steel made top rail with rectangular cross section with or without end cap.
- Stainless steel made with anti-slip groove. Stainless steel made thumb turn lock set with occupancy indicator. Stainless steel made Coat Hook with rubber stopper comes with/without cover which can carry load up to 25kg. Stainless steel made Hinges with cover, adjustable from fully close to open at interval of 15°. Stainless steel made adjustable Leg with options of providing different bottom gaps to cubicle.

# TITAN STANDARD



With round 55 top rail

## Titan Standard



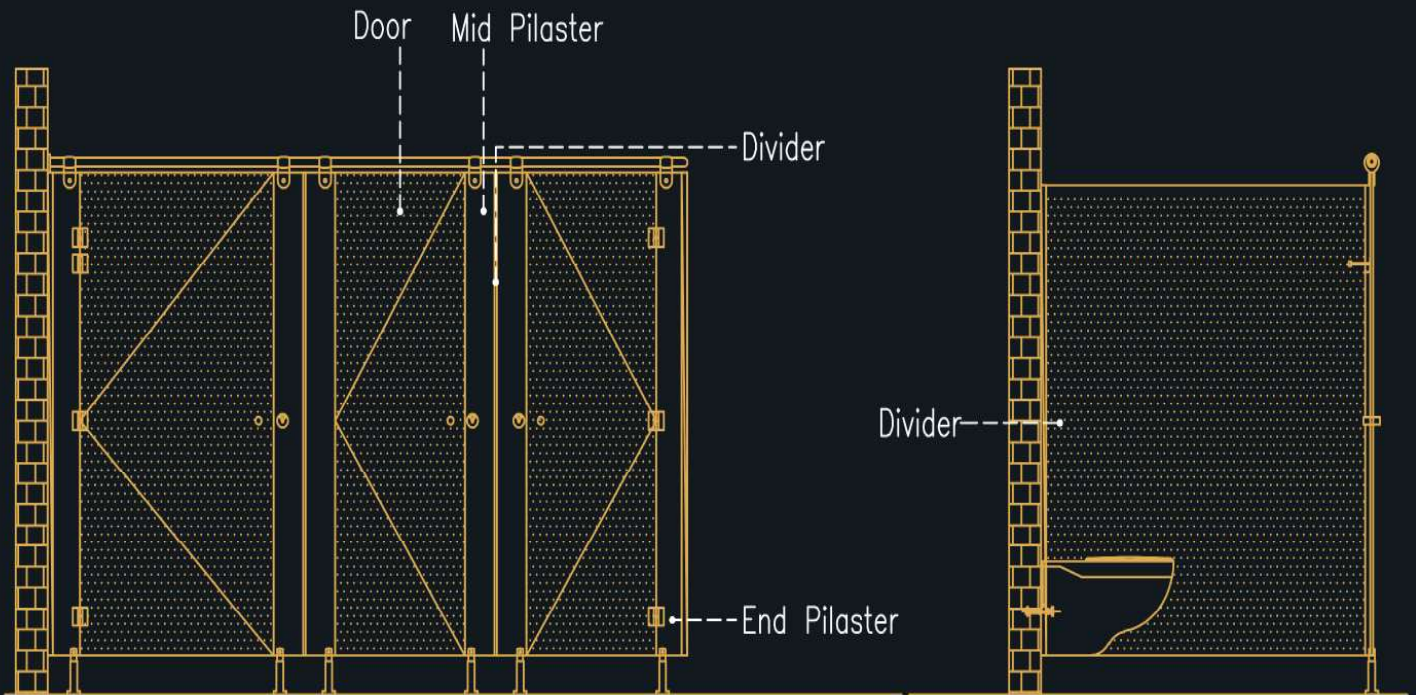
The Titan Standard Model on Page No. 47 has been shown with:



44757 (Piazza)



14675 (Ebony Sepia)



## Options

- Extensive Range of Colours
- Wood Grains
- Stone Designs
- State of the Art Accessories
- Customisation on Request

## Looks good in



11005



21019



21187



49931

## Description

Size of Cubicle	900 mm (W) X 1550 mm (D) X 2039 mm(H)
The recommended restroom cubicle size	900-1000 mm X 1500-1800 mm X 2039-2400 mm (W x D x H)
Height of restroom compartment measured from top of the pilaster	2039 mm (including bottom gap of 150 mm)
Door width	600 mm
Option 1: Overall Height Of Cubicle :	2039 mm (including bottom gap of 150 mm)
Option 2: Overall Height Of Cubicle :	2100 mm (including bottom gap of 100-150 mm)
Customised Overall Height Of Cubicle	2400 mm (including bottom gap of 100-150 mm)

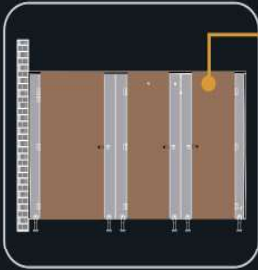


SS Round Top Rail



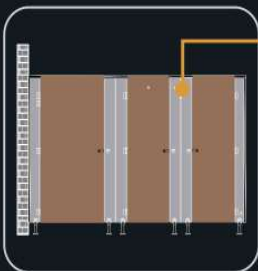
SS adjustable legs





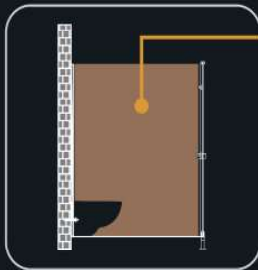
## Doors

All doors will be of single colour and made of 12 mm thick Merino HPL compact panel. The doors will have chamfered edges. Each door will be supported by 3 stainless steel made hinges affixed to the pilasters. Stainless steel made coat hook and lock set are provided with each door. All the doors will be routed at the vertical ends and the rubber sponge lining will be incorporated at the routed ends.



## Pilasters

All pilasters will be made of 12 mm thick Merino HPL compact panel with chamfered edge and completed with stainless steel made thumb turn lock set. Pilasters will be anchored to the floor using stainless steel made adjustable legs. All pilasters will be routed at their vertical ends to facilitate closure of doors. The bottom gap is 100 -150 mm.



## Intermediate Partitions or Dividers

All intermediate partitions or dividers will be made of 12 mm thick Merino HPL compact laminate panels. They are affixed with stainless steel made U-channel at their vertical ends for ultimate stability of the system.



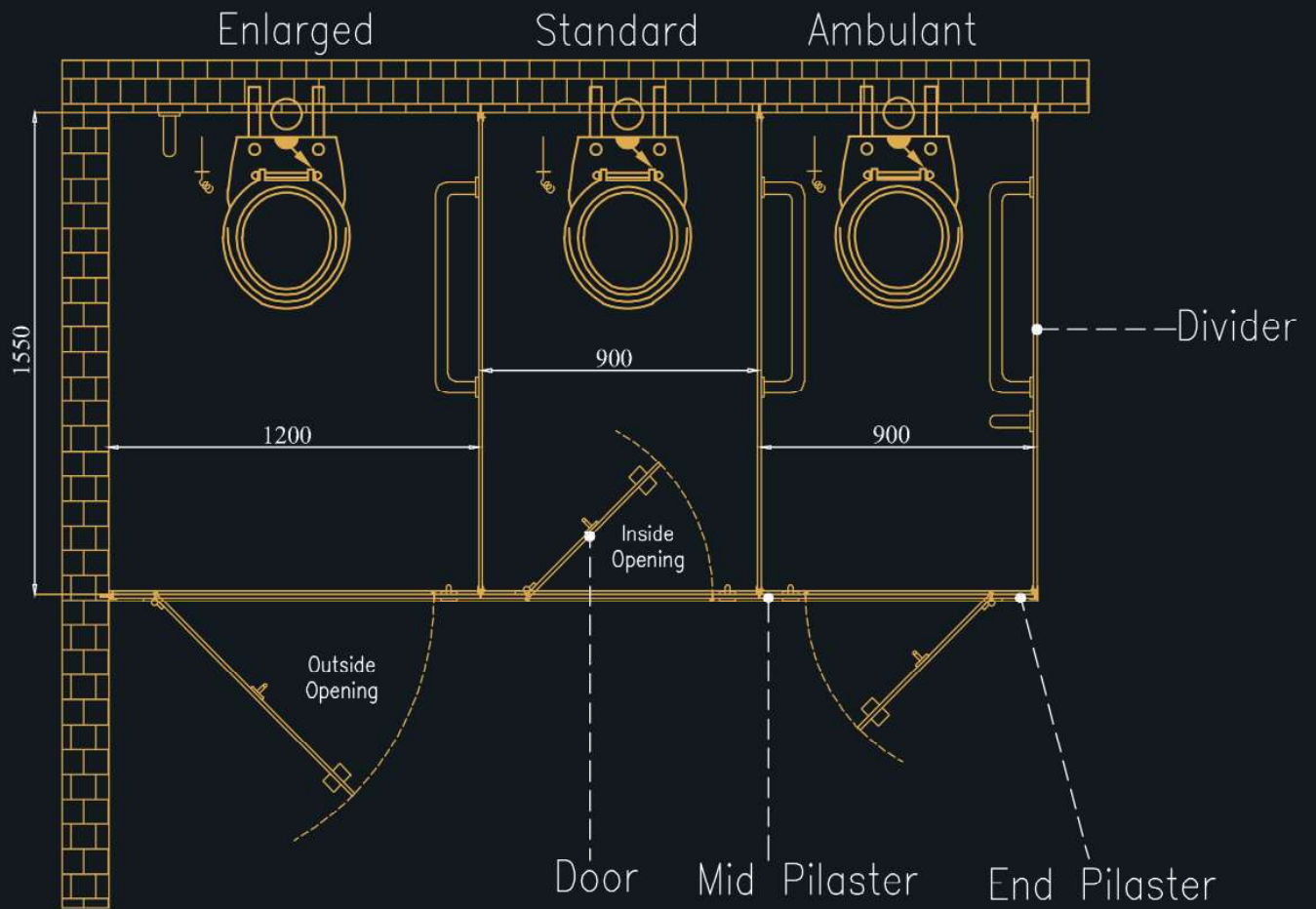
## Hardware and accessories

Each restroom cubicle of Titan Standard (with round top rail) model will be equipped with following hardware and accessories:

- Top Rail: Stainless steel made top rail with round cross section and wall fixing arrangement.
- Stainless steel made Door Knob with anti-slip groove. Stainless steel made thumb turn lock set with occupancy indicator. Stainless steel made coat hook with rubber stopper comes with/without cover which can carry load up to 25 kg. Stainless steel made hinges with cover, adjustable from fully close to open at interval of 15°. Stainless steel adjustable legs with options of providing different bottom gaps to cubicle.



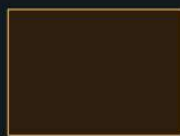
**ZMS SS  
Series**



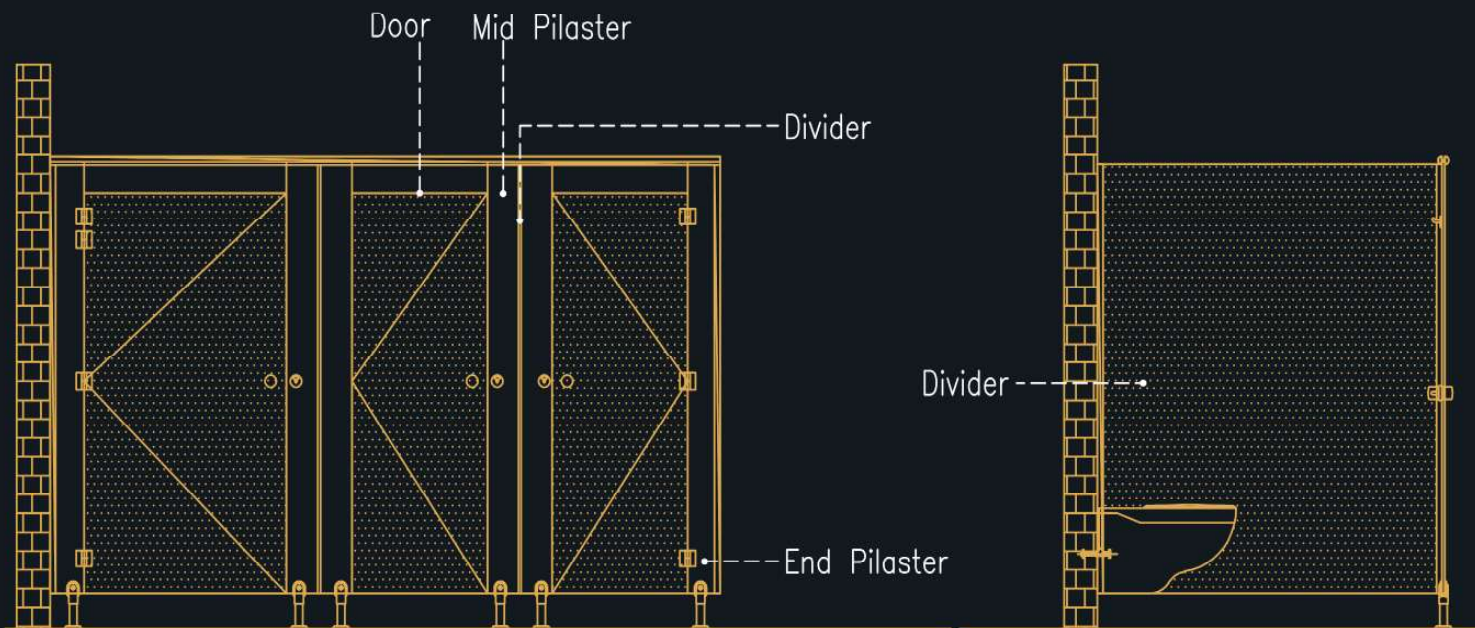
The ZMS SS Model on Page No. 55 has been shown with:



10510 (Walnut Bronze)



21028 (Chocolate)



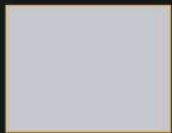
### Options

- Extensive Range of Colours
- Wood Grains
- Stone Designs
- State of the Art Accessories
- Customisation on Request

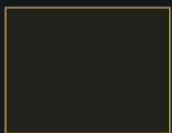
### Looks good in



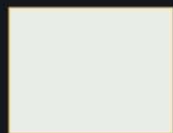
21187



21069



22099



22091

## Description

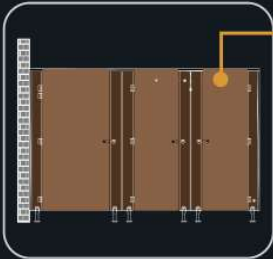
Size of Cubicle	900 mm (W) x 1550 mm (D) x 2003 mm (H)
The recommended restroom cubicle size	900-1000 mm X 1500-1800 mm X 2003-2100 mm (W x D x H)
Height of restroom compartment measured from top of the pilaster	2003 mm (including bottom gap of 150 mm)
Door width	600 mm
Overall Height Of Cubicle	2003 mm (including bottom gap of 150 mm)
Customised Overall Height Of Cubicle	2100 mm (including bottom gap 100-150 mm)



Powder coated top rail

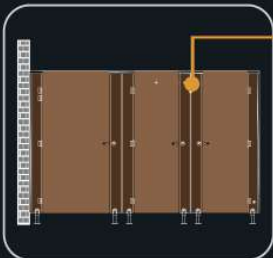


SS Adjustable legs



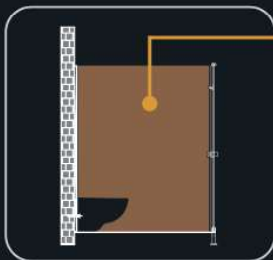
## Doors

All doors will be of single colour and made of 12 mm thick Merino HPL compact panel. The doors will have chamfered edges. Each door will be supported by 3 stainless steel made hinges affixed to the pilasters. Stainless steel made coat hook and lock set are provided with each door.



## Pilasters

All pilasters will be made of 12 mm thick Merino HPL compact panel with chamfered edge and completed with stainless steel made thumb turn lock set. Aluminum made door stopper profiles, with rubber linings for dampening the noise while door closing, will be provided at the vertical ends of the pilasters. Pilasters will be anchored to the floor using stainless steel made adjustable legs. The bottom gap is 100-150 mm.



## Intermediate Partitions or Dividers

All intermediate partitions or dividers will be made of 12 mm thick Merino HPL compact laminate panels. They are affixed with Aluminium made U-channel at their vertical ends for ultimate stability of the system.



## Hardware and accessories

Each restroom cubicle of ZMS SS model will be equipped with following hardware and accessories:

- Top Rail: Aluminium made top rail of dimension 50 mm x 34 mm x 1 mm (cross sectional dimension, W X H X Thk) will be affixed on top of the pilasters for maximum strength, stability and alignment of the system.
- Stainless steel made Door Knob of 30 mm, stainless steel made thumb turn lock set with occupancy indicator, stainless steel made coat hook with/without rubber stopper which can carry load up to 25 kg, stainless steel made hinges with 3 No's of standard, gravity-to-open or gravity-to-close, stainless steel adjustable legs with options of providing bottom gap of 100-150 mm to cubicle.

## ARIES IMEX BACK to School Series

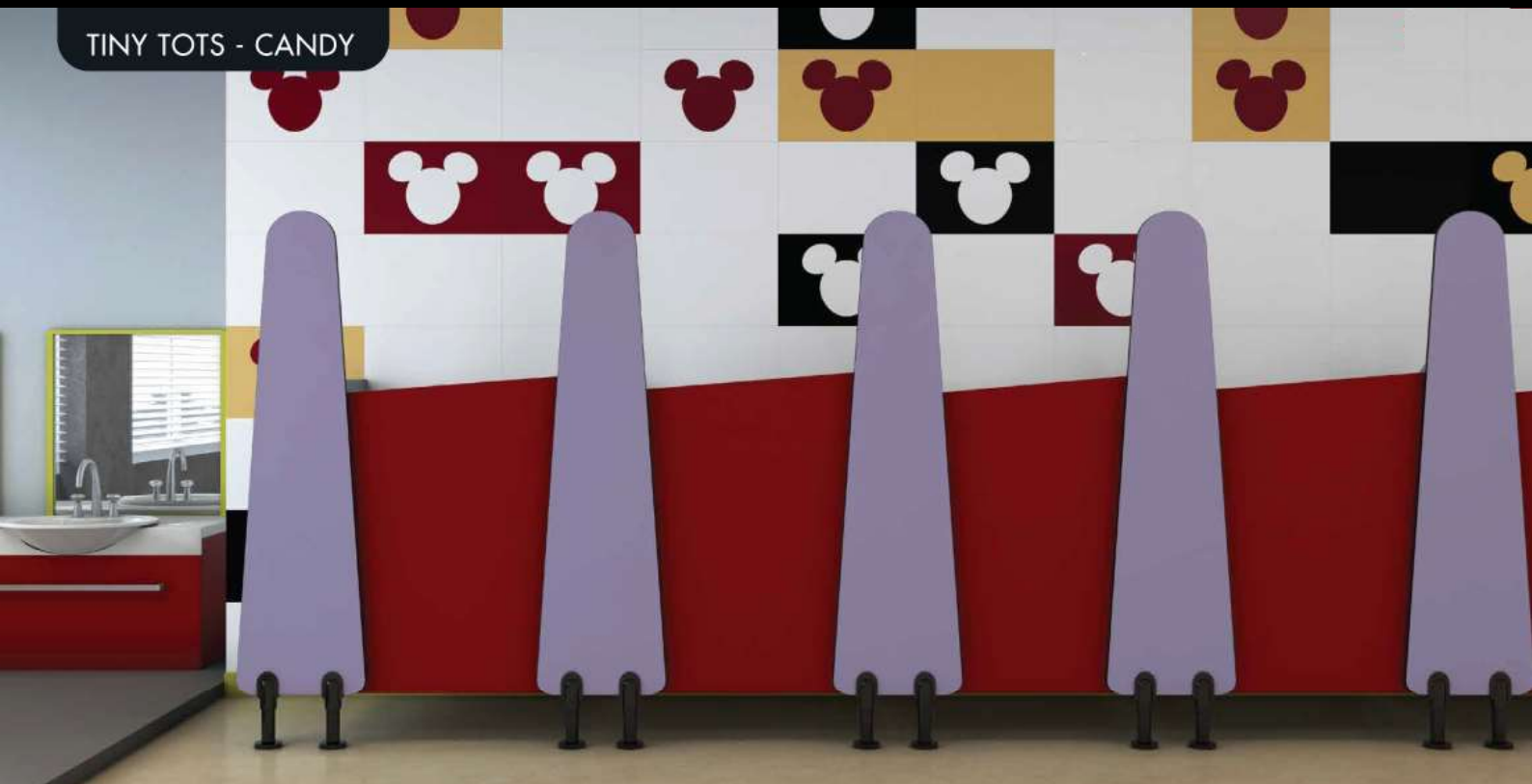
ARIES IMEX BACK to School Series have been designed to meet the requirements of all age group of children in formal education starting from Play School to High School. Special considerations on heights, shapes, structures, functions and aesthetics have been made as the cubicles should be children friendly. For safety and security, anti finger trap mechanism and latch lock cover have been designed for the hinges. Matching colour interiors can be created with ARIES IMEX RESTROOM CLADDING, ARIES IMEX Vanity Units and Urinal modesty panel, thereby creating a visual effects.



TINY TOTS - SKITTLE



TINY TOTS - CANDY





## Features

The Tiny Tots model, is a premium model customized for children. It has specially designed doors and pilasters fitted for smaller height. With sleek stainless steel accessories it has a definitive stable look. It's high on ease of maintenance and accessibility.

## Description

DESCRIPTION	TINTY TOTS SERIES	
	Tiny tots Skittle	Tiny tots Candy
Total height from ground (mm)	1350	1500
Width (mm)	820	820
Depth (mm)	1550	1550
Door Height (mm)	890	890
Door Width (mm)	750	750
Bottom Gap (mm)	100	150
Divider Maximum Height (mm)	1200	1200

The Skittle Model on Page No. 73  
has been shown with:



22084 (Blush)



22067 (Morning Glow)

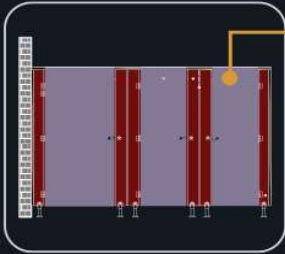
The Candy Model on Page No. 75  
has been shown with:



21065 (Cardinal)

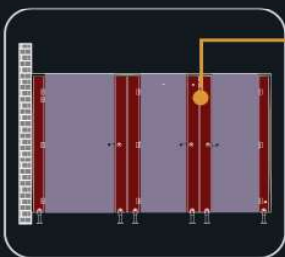


21012 (Lilac)



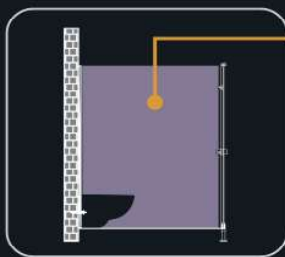
## Doors

All doors will be of single colour and made of 12 mm thick Merino HPL compact panel. The doors will have chamfered edges. Each door will be supported by 2 stainless steel/nylon made hinges affixed to the pilasters. Stainless steel/nylon made coat hook and lock set are provided with each door. All the doors will have rubber sponge lining at their vertical ends.



## Pilasters

All pilasters will be made of 12 mm thick Merino HPL compact panel with chamfered edge and completed with stainless steel/nylon made thumb turn lock set. For Skittle, pilasters will be anchored to the floor using stainless steel using box up fixtures. For Candy, Stainless Steel/Nylon made adjustable legs are used to anchor the pilasters to the floor.



## Intermediate Partitions/Dividers

All intermediate partitions or dividers will be made of 12 mm thick Merino HPL compact laminate panels. They are affixed with stainless steel/aluminum made U-channel at their vertical ends for ultimate stability of the system.



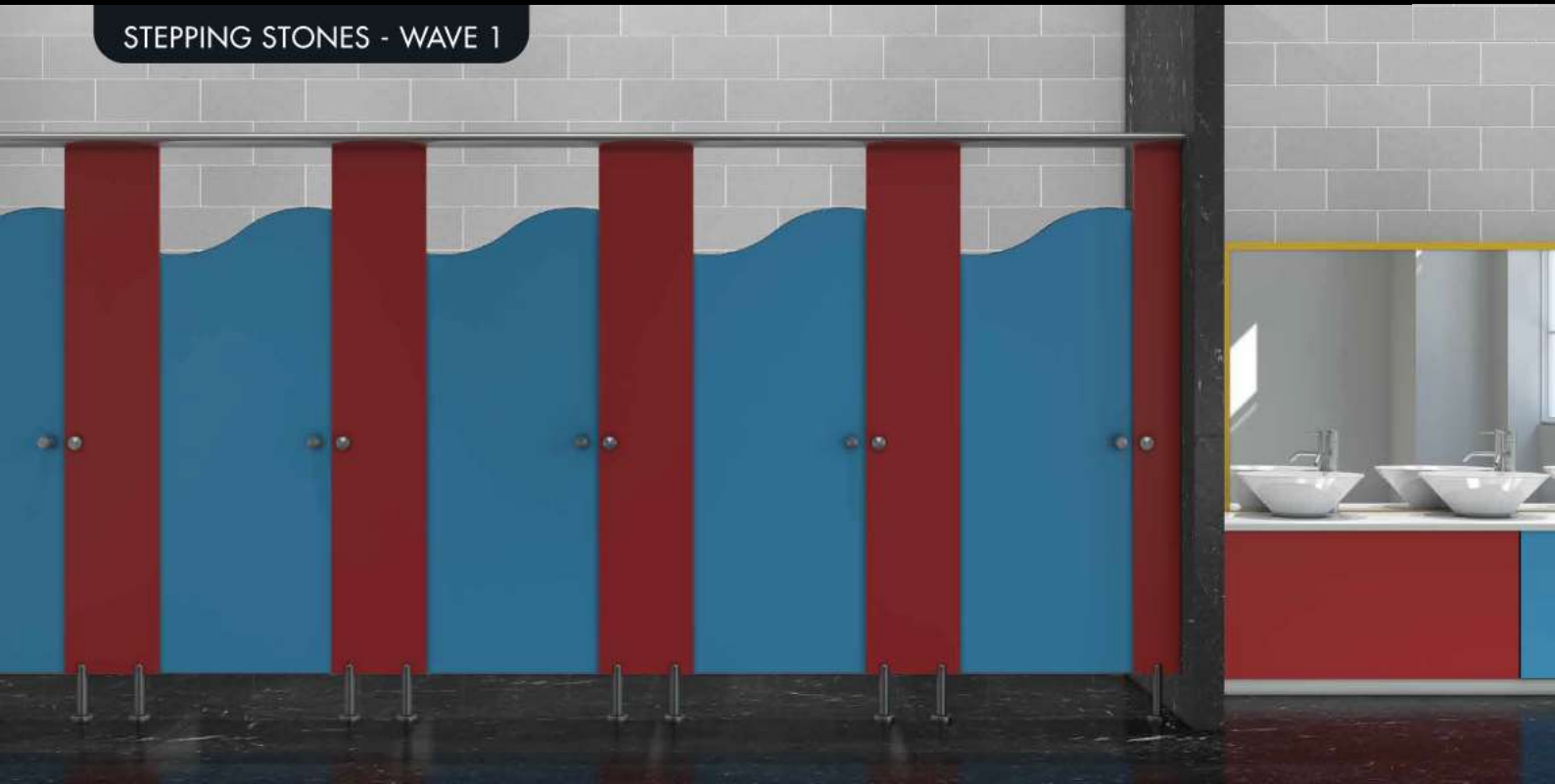
## Hardware and accessories

Each Restroom cubicle will be equipped with the following hardware and accessories:

- Stainless steel or nylon made Door Knob.
- Stainless steel or nylon made Thumb turn lock set with occupancy indicator.
- Stainless steel or nylon made Coat Hook with/without rubber stopper.
- Stainless steel or nylon made Hinges.
- Stainless steel or aluminum made U channel of 25 mm x16.5 mm x 1.8 mm (cross section dimension, L x W x Thk).
- Tiny Tots Basic: Hardware and accessories are available in nylon+aluminium and in 2 different colors, Black and White.
- Tiny Tots Premium: Hardware and accessories are available in stainless steel.

Note: You can always come with your designs with the constrain of dimension and ergonomic feasibility. We will make sure they are executed.

STEPPING STONES - WAVE 1



STEPPING STONES - WAVE 2



## Features

The Stepping Stones model has premium features with highlighted stainless steel/nylon/aluminum accessories. The product is supported from bottom adjustable legs and easy on maintenance and with stable and strong frame.

## Description

DESCRIPTION	STEPPING STONES SERIES	
	Stepping stones basics	Stepping stones premium
Total height from ground (mm)	2003	1980
Width (mm)	910	910
Depth (mm)	1550	1550
Door Height (mm)	1300	1300
Door Width (mm)	610	610
Bottom Gap (mm)	150	150
Divider Maximum Height (mm)	1550	1550

The Wave 1 Model on Page No. 79  
has been shown with:

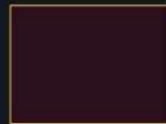


22232 (River Blue)

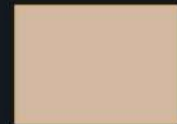


21065 (Cardinal)

The Wave 2 Model on Page No. 81  
has been shown with:

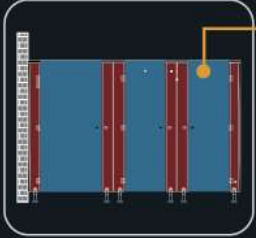


22105 (Berry Bunch)



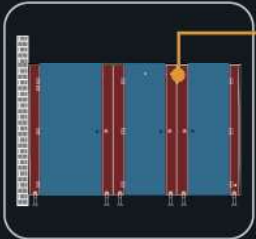
22087 (Shell)

For more colour options, please refer to MRS Shade Chain.



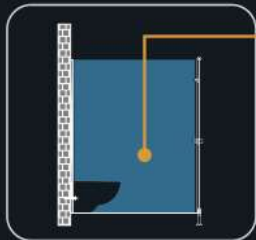
## Doors

All doors will be of single colour and made of 12 mm thick Merino HPL compact panel. The doors will have chamfered edges. Each door will be supported by 3 stainless steel/nylon made hinges affixed to the pilasters. Stainless steel/nylon made coat hook and lock set are provided with each door. All the doors will have rubber sponge lining at their vertical ends.



## Pilasters

All pilasters will be made of 12 mm thick Merino HPL compact panel with chamfered edge and completed with stainless steel/nylon made thumb turn lock set. The pilasters will be anchored to the floor using stainless steel/nylon made adjustable legs. Pilasters will be routed at their vertical end to facilitate closure of doors.



## Intermediate partitions or Dividers

All intermediate partitions or dividers will be made of 12 mm thick Merino HPL compact laminate panels. They are affixed with stainless steel/aluminum made U-channel at their vertical ends for ultimate stability of the system.



## Hardware and accessories

Each restroom cubicle will be equipped with the following hardware and accessories:

- Stainless steel or nylon made Door Knob.
- Stainless steel or nylon made Thumb turn lock set with occupancy indicator.
- Stainless steel or nylon made Coat Hook with/without rubber stopper.
- Stainless steel or nylon made Hinges with 2 No's of standard, gravity-to-open or gravity-to-close.
- Stainless steel or aluminum made U channel of 25 mm x 16.5 mm x 1.8 mm (cross section dimension, L x W x Thk).

**Stepping Stones Basic:** Hardware and accessories are available in nylon+aluminium and in 2 different colors: Black and white

**Stepping Stones Premium:** Hardware and accessories are available in stainless steel

You can always come up with your designs within the constraints of dimension and ergonomic feasibility. We will make sure they are executed.



D Shape

## Features

The Growing tree model is customized for the use of middle aged groups and is supported from bottom adjustable legs. It has Nylon, SS, Aluminium accessories and has a singular look. It's high on the ease of maintenance, accessibility and stability.

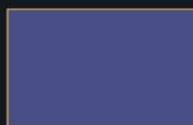
## Description

DESCRIPTION	GROWING TREE SERIES	
	Grow tree basics	Growing tree premium
Total height from ground (mm)	2003	1980
Width (mm)	910	910
Depth (mm)	1550	1550
Door Height (mm)	1550	1550
Door Width (mm)	610	610
Bottom Gap (mm)	150	150
Divider Maximum Height (mm)	1550	1550

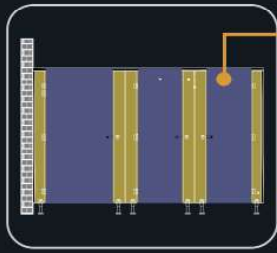
The Growing Tree Model on Page No. 85 has been shown with:



21057 (Marigold)

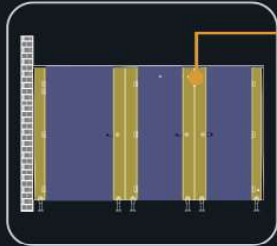


21142 (Polar Blue)



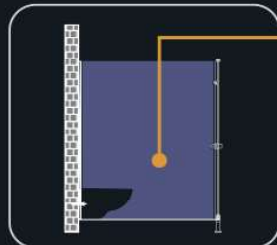
## Doors

All doors will be of single colour and made of 12 mm thick Merino HPL compact panel. The doors will have chamfered edges. Each door will be supported by 3 stainless steel/nylon made hinges affixed to the pilasters. Stainless steel/nylon made coat hook and lock set are provided with each door. All the doors will have rubber sponge lining at their vertical ends.



## Pilasters

All pilasters will be made of 12 mm thick Merino HPL compact panel with chamfered edge and completed with stainless steel/nylon made thumb turn lock set. The pilasters will be anchored to the floor using stainless steel/nylon made adjustable legs. Pilasters will be routed at their vertical ends to facilitate closure of doors.



## Intermediate Partitions or Dividers

All intermediate partitions or dividers will be made of 12 mm thick Merino HPL compact laminate panels. They are affixed with stainless steel/aluminum made U-channel at their vertical ends for ultimate stability of the system.



## Hardware and accessories

Each restroom cubicle will be equipped with the following hardware and accessories

- ◆ Stainless steel or nylon made Door Knob.
- ◆ Stainless steel or nylon made Thumb turn lock set with occupancy indicator.
- ◆ Stainless steel or nylon made Coat Hook with/without rubber stopper.
- ◆ Stainless steel or nylon made Hinges.
- ◆ Stainless steel or aluminium made U channel of 25 mm x 16.5 mm x 1.8 mm (cross section dimension, L x W x Thk).

**Glowing Tree Basic:** Hardware and accessories are available in nylon+aluminium and in 2 different colors: Black and white

**Glowing Tree Premium:** Hardware and accessories are available in stainless steel

You can always come up with your designs within the constraints of dimension and ergonomic feasibility. We will make sure they are executed.

## GENNEXT SERIES



### Features

The GenNext Series is targeted at high schools and teenagers. The style of the model is sleek and contemporary and this model also has stainless or nylon made hardware and accessories. The cubicle is supported from bottom using adjustable legs. Apart from having an extremely sturdy structure, this model is one of the easiest to maintain.

### Description

DESCRIPTION	GENNEXT SERIES		
	Gennext basic	Gennext Premium	Gennext Platinum
Total height from ground (mm)	2003	1980	2060
Width (mm)	910	910	910
Depth (mm)	1550	1550	1550
Door Height (mm)	1750	1750	1750
Door Width (mm)	610	610	610
Bottom Gap (mm)	150	150	150
Divider Maximum Height (mm)	1775	1775	1775

The Gennext Model on Page No. 89 has been shown with:

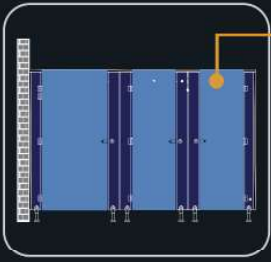


21092 (Sky Blue)



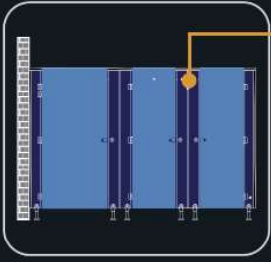
21142 (Polar Blue)





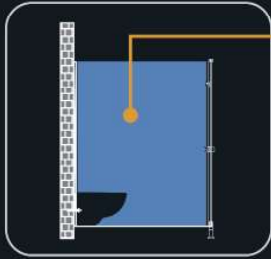
## Doors

All doors will be of single colour and made of 12 mm thick Merino HPL compact panel. The doors will have chamfered edges. Each door will be supported by 3 stainless steel/nylon made hinges affixed to the pilasters. Stainless steel/nylon made coat hook and lock set are provided with each door. All the doors will have rubber sponge lining at their vertical ends.



## Pilasters

All pilasters will be made of 12 mm thick Merino HPL compact panel with chamfered edge and completed with stainless steel/nylon made thumb turn lock set. The pilasters will be anchored to the floor using stainless steel/nylon made adjustable legs. Pilasters will be routed at their vertical end to facilitate closure of doors.



## Intermediate Partitions or Dividers

All intermediate partitions or dividers will be made of 12 mm thick Merino HPL compact laminate panels. They are affixed with stainless steel/aluminum made U-channel at their vertical ends for ultimate stability of the system.



## Hardware and accessories

Each restroom cubicle will be equipped with the following hardware and accessories:

- Stainless steel or nylon made Door Knob.
- Stainless steel or nylon made thumb turn lock set with occupancy indicator.
- Stainless steel or nylon made Coat Hook with/without rubber stopper.
- Stainless steel or nylon made Hinges with 2 No's of standard, gravity-to-open or gravity-to-close.
- Aluminium or stainless steel made U channel of 25 mm x16.5 mm x 1.8 mm (cross section dimension, L x W x Thk).

**GenNext Basic:** Hardware and accessories are available in nylon+aluminium and in 2 different colors: Black and white

**GenNext Premium:** Hardware and accessories are available in stainless steel

**GenNext Platinum:** Hardware and accessories are available in nylon+aluminium and in 2 different colors: Black and white. For Platinum, accessories can also be provided in stainless steel.

You can always come up with your designs within the constraints of dimension and ergonomic feasibility. We will make sure they are executed.

ARIES IMEX Presents a range of Locker System, Support Grab System, and Urinal Modesty Panels, Our Lockers are made of HPL Compact Panel which will give you customised styles and long lasting durability, Our support grab bar systems provide strength and are available in various dimensions for customisation. The Urinal Modesty Panels, made of HPL Compact laminates panels, take care of privacy and offers a diverse range to choose from.



## PD DOORS



### Description

Merino HPL compact laminate made pdDooR system aims to save space. This is ideal for use in renovation projects using existing brick walls. pdDoor provides an added advantage of traditional looks along with the benefits of dry system like ease of cleaning and maintenance, good air ventilation due to bottom floor clearance. For retrofit projects where only doors are required, the versatile 'Merino pdDooR System' can interface with existing dividing brick-wall with a wrap-around matching pilaster to achieve an aesthetically pleasing solution.

### Specifications

All pd Doors are made up of 12mm thick compact board. Its hardware and accessories are available in aluminium and nylon

#### Total Height from Ground

- Standard Cubicle Sizes (specially abled) : 1980 mm & 2100 mm
- Standard Cubicle Sizes (Regular) : 1980 mm & 2100 mm

#### Width

- Standard Cubicle Sizes (specially abled) : 970 mm
- Standard Cubicle Sizes (Regular) : 670 mm

#### Depth

- Standard Cubicle Sizes (specially abled) : 1550 mm
- Standard Cubicle Sizes (Regular) : As per existing available space (min. recommended as 1550 mm)

#### Bottom Gap

2100 x 910 mm

- Standard Cubicle Sizes (specially abled) : 150 mm
- Standard Cubicle Sizes (Regular) : for 1980 mm Height – 150 mm

#### Door Size

- Standard Cubicle Sizes (specially abled) : 2100 mm height – 2100 x 910 mm
- Standard Cubicle Sizes (Regular) : 2100 mm height – 2100 mm x 610 mm

#### Door Size

- Standard Cubicle Sizes (specially abled) : 1980 mm Height – 1830 x 910 mm
- Standard Cubicle Sizes (Regular) : 1980 mm Height – 1830 x 610 mm

# Why Pd Door

1. Ideal for renovation project
2. Slim & strong
3. Aesthetic look
4. Various colour option
5. Highly durable
6. Wrap around matching pilaster
7. Faster installation : It allows very fast installation saving time and efforts.
8. Easy to clean : It allows full access to clean the floor area making cleaning very easy.
9. Maintenance friendly

"Aluminium and nylon hardware and accessories are available in three different colour choices:- Black, Grey & White.

## Construction:

1. Each door is equipped with one coat hook, one door knob and one WC lock.
2. Door opening provision is available in inside direction only. Opening direction of door can be left or right. Aluminium made door stopper channels, with provision of rubber lining, are provided for noiseless closing of door.
3. Aluminium made D-shaped poles are fixed on the brick wall on both sides. Doors are mounted on the D-shaped poles with the help of 3 hinges. Bottom gap of 150 mm is provided between door and floor.

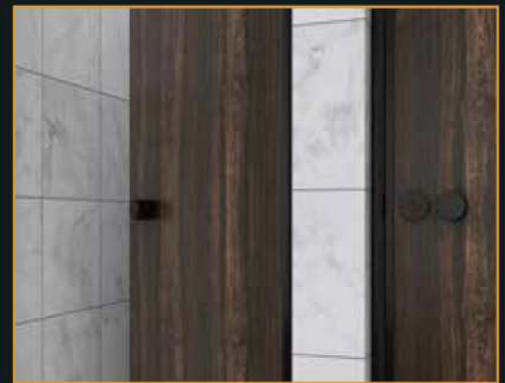
The Pd Door Model on Page No. 95 has been shown with:



14690 (Alhamara Wood)



D Pole

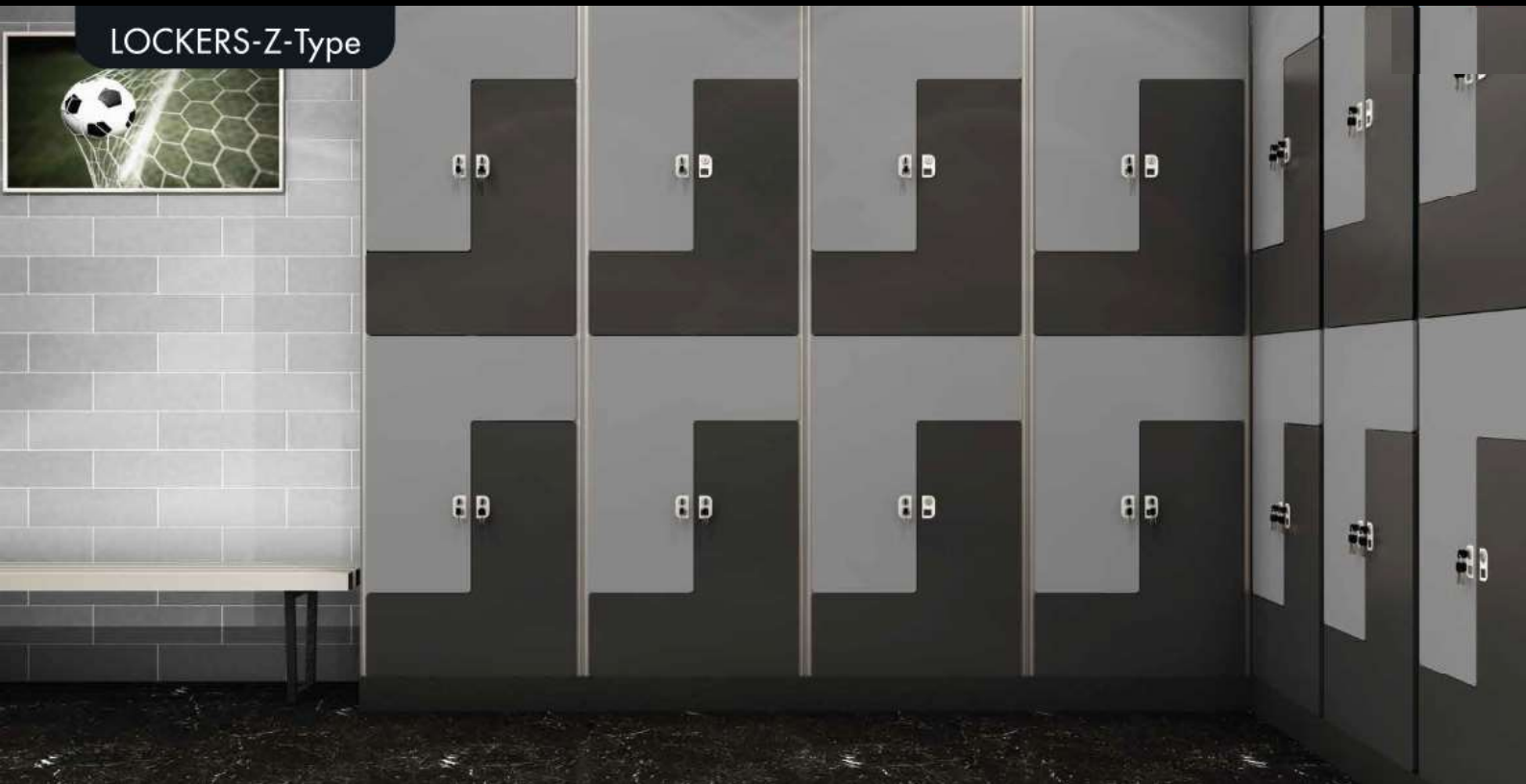


Doorknob and occupancy indicator

LOCKERS - A-6 Type



LOCKERS-Z-Type



## Description

Merino-Besco Locker system is the ultimate in locker design and construction. Sturdy Merino HPL compact laminate made constructions combined with state-of-the art hardware design give you an extensive range of customised styles and sizes for your individual storage needs. Be it a changing room, library, clubhouse, gym, swimming pool or school, our lockers suit all such application areas.

## Advantages

Key advantages of these lockers as compared to traditional lockers made out of 'wood', 'steel' or 'plastic' are :

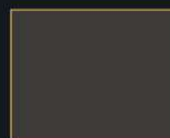
- Excellent resistance to vandalism
- Easy to install, clean and maintain
- Wide range of colours matching with interiors
- Water resistant
- Elegant looks
- Excellent resistance to impact
- Rust proof

The Locker-A6-Type Model on Page No. 99  
has been shown with:



10856 (Siam Wood)

The Locker-Z-Type Model on Page No. 101  
has been shown with:



22099 (Slate)



21369 (Pebble Grey)

## Hardware & Accessories

- Aluminum front channel (powder coated/anodized, silver coloured)
- Back channel (powder coated/anodized, silver coloured)
- Aluminium half round channel (powder coated/anodized, silver coloured)
- Number plate
- Hinge
- Rubber lining (black)
- Cam lock
- Fasteners (Stainless Steel)
- M.S. U-Clip (powder coated, silver coloured)

## Locking Mechanism

We offer a range of locks (Cam Lock, Hasp Lock) to suit most environments.

### Details

Merino HPL compact laminate for water resistance and excellent durability

### Shelf

9 mm thick compact laminate made shelf provides robust structure

### Doors

9 mm thick compact laminate made doors with integrated hinge design

### Slide & Back Divider

3 mm thick compact laminate made slide and back divider

### Top & Bottom Divider

9 mm thick compact laminate made top and bottom divider Top & Bottom Divider provide stability to the whole structure

## Application Area



Swimming Pool



Library



Gym



Sports Complex



Labs



Staff Room



Changing Room



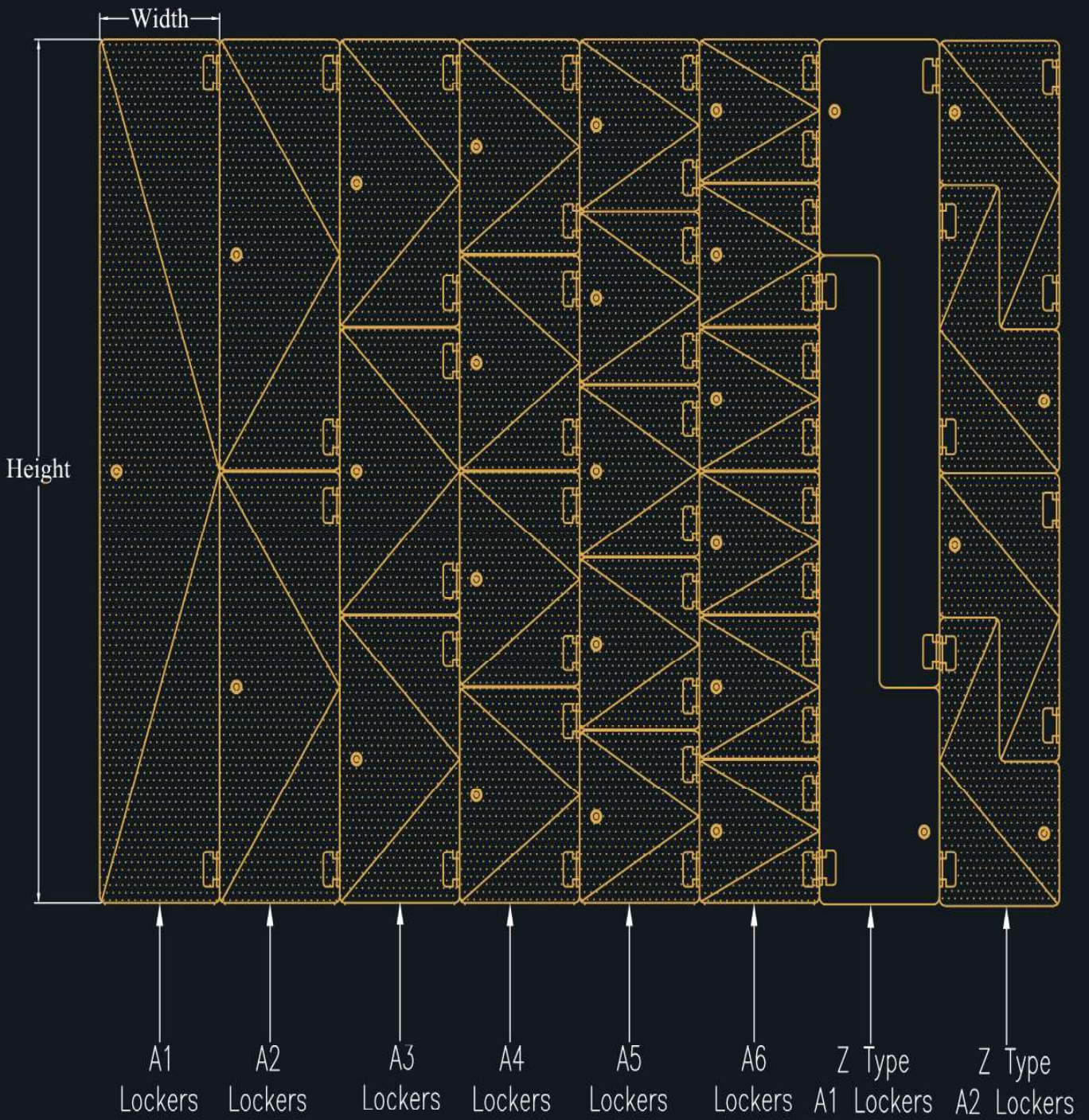
Stadium

## Standard Lockers Sizes

Width 300 mm x Depth 400 mm x Height 1830 mm.

A1 size means "Single door locker unit", A2 size means «Two doors locker unit» and so on.





## URINAL MODESTY PANELS



## Features

The Urinal Modesty Panels (UMPs) are made for men restrooms. UMP is basically the separator between two adjacent urinals. It has hardware made of polyamide grade 6 (nylon) or stainless steel. The Urinary Panel has a 12 mm thick High Pressure Laminates (HPL) Compact Board, with a recommended panel width dimensions of 400-500 mm. The size of the UMP is 500 mm (W-Top) X 400 mm (W-Bottom) X 1200 mm (H), with the overall height of 1200 mm.

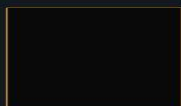
### Hardware



Stainless steel or nylon PA-6 made brackets are used for fixing the UMP panels to the wall.



The UMP Model on Page No. 107-108  
has been shown with:



21066 (Black)

## GRAB BARS



## Description

Merino-Besco Support Grab Bar system is a versatile tube and connector system that enables creative customised design for support grab bars, guide railings, balustrades and stairways where vertical post fixing is required. Grab bars are made of seamless bacteria resistant grade polyamide, diameter 30 mm x 3.2 mm with wall fixing rose made of anti-corrosive steel rose diameter 80 mm, polyamide cap to conceal fixing. Our modular construction simplifies installation and clamps accommodate 10 mm glass or HPL panels. All products have been designed for strength and with solid fastenings. The construction is reinforced with aluminium and zinc galvanized components.

The Support Grab Bar system is available in left and right handed versions with plug and screws. Our system conforms to ADA standards for toilets for the specially abled. Our tactile directional signages facilitate the visually handicapped.

## Advantages

- Resistance to accumulation growth
- Color options (Black, Grey and White) to match individual choices
- Resistance to bacteria growth
- Seamless design
- No cold grips in air-conditioned environment unlike steel grab bars



# Restroom Solution Design Range



# BOQ - Ceiling Hung

Toilet Cubicles & Associated works	Qty	UNIT	RATE	AMT	COLOUR
				C1-	C2-
<p><b>Scope of Work</b></p> <p>Supply and installation of Merino-Besco CEILING HUNG series cubicles of width and depth as per specifications/site drawings. Cubicle height to be 2400 mm.</p>					
<p><b>ITEM DESCRIPTION</b></p> <p>Made from solid grade compact high pressure laminate as per IS:2046 and EN 438 manufactured under high specific pressure &gt; 5 MPa and temperature &gt;°120 C with bunch of kraft papers impregnated with thermosetting phenolic resin and decorative papers made of Alpha cellulose fiber impregnated with thermosetting melamine resin which provide superior scratch, abrasion, heat, chemical, impact, graffiti &amp; moisture resistance along with anti-bacterial properties.</p>					
<p><b>Doors:</b></p> <p>All doors will be of single colour and made of 18 mm thick Merino HPL compact panel. The doors will have chamfered edges. Each door will be supported by 3 stainless steel made hinges affixed to the pilasters. Stainless steel made coat hook and lock set are provided with each door. All the doors will be routed at the vertical ends and the rubber sponge lining will be incorporated at the routed ends.</p>					
<p><b>Pilasters:</b></p> <p>All pilasters will be made of 18 mm thick Merino HPL compact panel. The pilasters are affixed to the mild steel rectangular plates (250 mm x 75 mm x 6 mm) and the plates are in turn fixed with the top rail. The assembled parts will be concealed by the stainless steel made box up fixture. The pilasters will be routed at their vertical ends to facilitate proper closure of doors. The visible height from finished floor level to false ceiling is 2400 mm including a floor clearance of 100 mm.</p>					
<p><b>Dividers:</b></p> <p>All intermediate partitions or dividers will be made of 12 mm thick Merino HPL compact laminate panels. They are affixed with stainless steel made U-channel at their ends for ultimate stability of the system.</p> <p>Design no. as specified by Arch. / Engr. in suede finish. Size of panels to be as per drawing.</p>					
<p><b>HARDWARE &amp; ACCESSORIES</b></p> <ul style="list-style-type: none"> <li>H shaped (Top) head frame structure made of extruded Aluminum grade 6063 T50-5 micron epoxy powder coated for surface protection. Size to be 125x70x5T. Corner joinery section, Size to be 40x16.5x1.8T. U-Channel Wall joinery section, Size to be 22x16x1.6T. Door stopper section, Size to be 21x12.5x1.6T.</li> <li>Spring loaded Butt Hinges made from Stainless steel grade 304. Surface finish to be matt type. Covers to be lacor coated.</li> <li>Coat hook with rubber stopper made from Stainless steel grade 304. Surface finish to be matt type.</li> <li>Round Door knob diameter 30 mm with grooves for better hand grip made from Stainless steel grade 304. Surface finish to be matt type.</li> <li>Rotating Thumb-turn locking system with privacy indicator made from Stainless steel grade 304. Surface finish to be matt type.</li> <li>Stainless steel grade 304 screws.</li> </ul>					
<p>Ceiling Hung Series Cubicles: Std Sizes (W x D x H): 900 mm x 1550 mm x 2400 mm, (Height is including 100 mm gap from bottom) Door Width: 600 mm</p>		NOS			

# BOQ - Athena Lite

Toilet Cubicles & Associated works	Qty	UNIT	RATE	AMT	COLOUR
				C1-	C2-
<p><b>Scope of Work</b></p> <p>Supply and installation of Merino Besco TITAN 12MM BOX UP series cubicles of width and depth as per specifications/site drawings. Cubicle height to be 2100 mm.</p>					
<p><b>ITEM DESCRIPTION</b></p> <p>Made from solid grade compact high pressure laminate as per IS:2046 and EN 438 manufactured under high specific pressure &gt; 5 MPa and temperature &gt;120C with bunch of kraft papers impregnated with thermosetting phenolic resin and decorative papers made of Alpha cellulose fiber impregnated with thermosetting melamine resin which provide superior scratch, abrasion, heat, chemical, impact, graffiti &amp; moisture resistance along with anti-bacterial properties. Panels have a black core that when machined, presents a distinctive black edge.</p>					
<p><b>Doors:</b></p> <p>All doors will be of single colour and made of 12 mm thick Merino HPL compact panel. The doors will have chamfered edges. Each door will be supported by 3 stainless steel made hinges affixed to the pilasters. Stainless steel made coat hook and lock set are provided with each door. All the doors will be routed at the vertical ends and the rubber sponge lining will be incorporated at the routed ends.</p>					
<p><b>Pilasters:</b></p> <p>All pilasters will be made of 12 mm thick Merino HPL compact panel with chamfered edge and completed with stainless steel made thumb turn lock set. Pilasters will be anchored to the floor using steel made L brackets and box up fixtures are used for covering the floor anchored mechanism. All pilasters will be routed at their vertical ends to facilitate closure of doors. The bottom gap is 100 mm.</p>					
<p><b>Dividers:</b></p> <p>All intermediate partitions or dividers will be made of 12 mm thick Merino HPL compact laminate panels. They are affixed with stainless steel made U-channel at their ends for ultimate stability of the system.</p> <p>Design no. as specified by Arch. / Engr. in suede finish. Size of panels to be as per drawing.</p>					
<p><b>HARDWARE &amp; ACCESSORIES</b></p> <ul style="list-style-type: none"> <li>Top rail is made of stainless steel grade 304. A thin plastic film pasted for surface protection. Dimension is 55mmx42mmx1.6 mmT.</li> <li>Corner joinery section made from Stainless steel grade 304. Surface finish to be brush type. A thin plastic film pasted for surface protection. Size to be 35mmx15mmx0.8 mmT.</li> <li>Wall joinery section with hamming profile made from Stainless steel grade 304. Surface finish to be brush type. A thin plastic film pasted for surface protection. Size to be 21mmx16mmx0.8 mmT.</li> <li>Fixed front panel to be anchored to floor with L Bracket of SS and covered with SS 316 Grade Box Type plate from all directions with 100mm clear Height from ground. Surface finish to be matt type.</li> <li>Spring loaded Butt Hinges made from Stainless steel grade 304. Surface finish to be matt type. Covers to be lacor coated.</li> <li>Coat hook with rubber stopper made from Stainless steel grade 304. Surface finish to be matt type.</li> <li>Round Door knob diameter 30 mm with grooves for better hand grip made from Stainless steel grade 304. Surface finish to be matt type.</li> <li>Rotating Thumb-turn locking system with privacy indicator made from Stainless steel grade 304. Surface finish to be matt type.</li> <li>Anti-noise rubber padding of thickness 2 mm and width 10 mm</li> <li>Stainless steel grade 304 screws.</li> </ul>					
<p>Titan Box up 12 mm Series Cubicles: Std Sizes (W x D x H)- 900 mm x 1550 mm x 2100 mm, (Height is including 100 mm gap from bottom) Door Width- 600 mm</p>		NOS			

# BOQ - Titan 18 Mm Box Up Series

Toilet Cubicles & Associated works	Qty	UNIT	RATE	AMT	COLOUR
				C1-	C2-
<p><b>Scope of Work</b></p> <p>Supply and installation of Merino Besco TITAN 18MM BOX UP series cubicles of width and depth as per specifications/site drawings. Cubicle height to be 2100 mm.</p>					
<p><b>ITEM DESCRIPTION</b></p> <p>Made from solid grade compact high pressure laminate as per IS:2046 manufactured under high specific pressure &gt; 5 MPa and temperature &gt;°120C with bunch of kraft papers impregnated with thermosetting phenolic resin and decorative papers made of Alpha cellulose fiber impregnated with thermosetting melamine resin which provide superior scratch, abrasion, heat, chemical, impact, graffiti &amp; moisture resistance along with anti-bacterial properties. Panels have a black core that when machined, presents a distinctive black edge.</p>					
<p><b>Doors:</b></p> <p>All doors will be of single colour and made of 18 mm thick Merino HPL compact panel. The doors will have chamfered edges. Each door will be supported by 3 stainless steel made hinges affixed to the pilasters. Stainless steel made coat hook and lock set are provided with each door. All the doors will be routed at the vertical ends and the rubber sponge lining will be incorporated at the routed ends.</p>					
<p><b>Pilasters:</b></p> <p>All pilasters will be made of 18 mm thick Merino HPL compact panel with chamfered edge and completed with stainless steel made thumb turn lock set. Pilasters will be anchored to the floor using steel made L brackets and box up fixtures are used for covering the floor anchored mechanism. All pilasters will be routed at their vertical ends to facilitate closure of doors. The bottom gap is 100 mm.</p>					
<p><b>Dividers:</b></p> <p>All intermediate partitions or dividers will be made of 18 mm thick Merino HPL compact laminate panels. They are affixed with stainless steel made U-channel at their ends for ultimate stability of the system.</p> <p>Design no. as specified by Arch. / Engr. in suede finish. Size of panels to be as per drawing.</p>					
<p><b>HARDWARE &amp; ACCESSORIES</b></p> <ul style="list-style-type: none"> <li>No head frame structure, all panels to be aliengned to the top</li> <li>Corner joinery section made from Stainless steel grade 304. Surface finish to be brush type. A thin plastic film pasted for surface protection. Size to be 35mmx15mmx0.8 mmT.</li> <li>Wall joinery section with hamming profile made from Stainless steel grade 304. Surface finish to be brush type. A thin plastic film pasted for surface protection. Size to be 21mmx16mmx0.8 mmT.</li> <li>Fixed front panel to be anchored to floor with L Bracket of SS and covered with SS 316 Grade Box Type plate from all directions with 100mm clear Height from ground. Surface finish to be matt type.</li> <li>Spring loaded Butt Hinges made from Stainless steel grade 304. Surface finish to be matt type. Covers to be lacor coated.</li> <li>Coat hook with rubber stopper made from Stainless steel grade 304. Surface finish to be matt type.</li> <li>Round Door knob diameter 30 mm with grooves for better hand grip made from Stainless steel grade 304. Surface finish to be matt type.</li> <li>Rotating Thumb-turn locking system with privacy indicator made from Stainless steel grade 304. Surface finish to be matt type.</li> <li>Anti-noise rubber padding of thickness 2 mm and width 10 mm</li> <li>Stainless steel grade 304 screws.</li> <li>Anti-rotation Nylon polyamide grade6- expandable wall plugs.</li> </ul>					
<p>Titan Box up 18 mm Series Cubicles: Std Sizes (W x D x H)- 900 mm x 1550 mm x 2100 mm, (Height is including 100 mm gap from bottom) Door Size- 600 mm</p>		NOS			



# BOQ - Titan 12mm Box Up Series

Toilet Cubicles & Associated works	Qty	UNIT	RATE	AMT	COLOUR
				C1-	C2-
<p><b>Scope of Work</b></p> <p>Supply and installation of Merino Besco TITAN 12MM BOX UP series cubicles of width and depth as per specifications/site drawings. Cubicle height to be 2100 mm.</p>					
<p><b>ITEM DESCRIPTION</b></p> <p>Made from solid grade compact high pressure laminate as per IS:2046 and EN 438 manufactured under high specific pressure &gt; 5 MPa and temperature &gt;°120C with bunch of kraft papers impregnated with thermosetting phenolic resin and decorative papers made of Alpha cellulose fiber impregnated with thermosetting melamine resin which provide superior scratch, abrasion, heat, chemical, impact, graffiti &amp; moisture resistance along with anti-bacterial properties. Panels have a black core that when machined, presents a distinctive black edge.</p>					
<p><b>Doors:</b></p> <p>All doors will be of single colour and made of 12 mm thick Merino HPL compact panel. The doors will have chamfered edges. Each door will be supported by 3 stainless steel made hinges affixed to the pilasters. Stainless steel made coat hook and lock set are provided with each door. All the doors will be routed at the vertical ends and the rubber sponge lining will be incorporated at the routed ends.</p>					
<p><b>Pilasters:</b></p> <p>All pilasters will be made of 12 mm thick Merino HPL compact panel with chamfered edge and completed with stainless steel made thumb turn lock set. Pilasters will be anchored to the floor using steel made L brackets and box up fixtures are used for covering the floor anchored mechanism. All pilasters will be routed at their vertical ends to facilitate closure of doors. The bottom gap is 100 mm.</p>					
<p><b>Dividers:</b></p> <p>All intermediate partitions or dividers will be made of 12 mm thick Merino HPL compact laminate panels. They are affixed with stainless steel made U-channel at their ends for ultimate stability of the system.</p> <p>Design no. as specified by Arch. / Engr. in suede finish. Size of panels to be as per drawing.</p>					
<p><b>HARDWARE &amp; ACCESSORIES</b></p> <ul style="list-style-type: none"> <li>• Top rail is made of stainless steel grade 304. A thin plastic film pasted for surface protection. Dimension is 55mmx42mmx1.6 mmT.</li> <li>• Corner joinery section made from Stainless steel grade 304. Surface finish to be brush type. A thin plastic film pasted for surface protection. Size to be 35mmx15mmx0.8 mmT.</li> <li>• Wall joinery section with hamming profile made from Stainless steel grade 304. Surface finish to be brush type. A thin plastic film pasted for surface protection. Size to be 21mmx16mmx0.8 mmT.</li> <li>• Fixed front panel to be anchored to floor with L Bracket of SS and covered with SS 316 Grade Box Type plate from all directions with 100mm clear Height from ground. Surface finish to be matt type.</li> <li>• Spring loaded Butt Hinges made from Stainless steel grade 304. Surface finish to be matt type. Covers to be lacor coated.</li> <li>• Coat hook with rubber stopper made from Stainless steel grade 304. Surface finish to be matt type.</li> <li>• Round Door knob diameter 30 mm with grooves for better hand grip made from Stainless steel grade 304. Surface finish to be matt type.</li> <li>• Rotating Thumb-turn locking system with privacy indicator made from Stainless steel grade 304. Surface finish to be matt type.</li> <li>• Anti-noise rubber padding of thickness 2 mm and width 10 mm</li> <li>• Stainless steel grade 304 screws</li> </ul>					
<p>Titan Box up 12 mm Series Cubicles: Std Sizes (W x D x H)- 900 mm x 1550 mm x 2100 mm, (Height is including 100 mm gap from bottom) Door Width- 600 mm</p>		NOS			

# BOQ - Titan Standard Series

Toilet Cubicles & Associated works	Qty	UNIT	RATE	AMT	COLOUR
				C1-	C2-
<p><b>Scope of Work</b></p> <p>Supply and installation of Merino-Besco TITAN STANDARD series cubicles of width and depth as per specifications/site drawings. Cubicle height will be 1980 mm when top rail of rectangular cross section is used and 2039 mm when top rail of circular cross section is used.</p>					
<p><b>ITEM DESCRIPTION</b></p> <p>Made from solid grade compact high pressure laminate as per IS:2046 and EN438- manufactured under high specific pressure &gt; 5 MPa and temperature &gt;120C with bunch of kraft papers impregnated with thermosetting phenolic resin and decorative papers made of Alpha cellulose fiber impregnated with thermosetting melamine resin which provide superior scratch, abrasion, heat, chemical, impact, graffiti &amp; moisture resistance along with anti-bacterial properties. Panels have a black core that when machined, presents a distinctive black edge.</p>					
<p><b>Doors:</b></p> <p>All doors will be of single colour and made of 12 mm thick Merino HPL compact panel. The doors will have chamfered edges. Each door will be supported by 3 stainless steel made hinges affixed to the pilasters. Stainless steel made coat hook and lock set are provided with each door. All the doors will be routed at the vertical ends and the rubber sponge lining will be incorporated at the routed ends.</p>					
<p><b>Pilasters:</b></p> <p>All pilasters will be made of 12 mm thick Merino HPL compact panel with chamfered edge and completed with stainless steel made thumb turn lock set. Pilasters will be anchored to the floor using stainless steel made adjustable legs . All pilasters will be routed at their vertical ends to facilitate closure of doors. The bottom gap is 150-100 mm.</p> <p>Design no. as specified by Arch. / Engr. in suede finish. Size of panels to be as per drawing.</p>					
<p><b>Dividers:</b></p> <p>All intermediate partitions or dividers will be made of 12 mm thick Merino HPL compact laminate panels. They are affixed with stainless steel made U-channel at their ends for ultimate stability of the system.</p>					
<p><b>HARDWARE &amp; ACCESSORIES</b></p> <ul style="list-style-type: none"> <li>• Top rail is made of stainless steel grade 304. There are two options for the top rail. First one comes with a rectangular cross section (Size to be 55mmx42mmx1,6 mmT) and the other one comes with circular cross section (Diameter 32 mm). Surface finish to be brush type. A thin plastic film pasted for surface protection.</li> <li>• Corner joinery section made from Stainless steel grade 304. Surface finish to be brush type. A thin plastic film pasted for surface protection., Size to be 35mmx15mmx0,8 mmT.</li> <li>• Wall joinery section with hamming profile made from Stainless steel grade 304. Surface finish to be brush type. A thin plastic film pasted for surface protection. Size to be 21mmx16mmx0,8 mmT.</li> <li>• Adjustable Pedestal Footing of base diameter 64 mm made from Stainless steel grade 316 giving a clearance height of 150 mm. Surface finish to be matt type.</li> <li>• Spring loaded Butt Hinges made from Stainless steel grade 304. Surface finish to be matt type. Covers to be lacor coated.</li> <li>• Coat hook with rubber stopper made from Stainless steel grade 304. Surface finish to be matt type.</li> <li>• Round Door knob diameter 30 mm with grooves for better hand grip made from Stainless steel grade 304. Surface finish to be matt type.</li> <li>• Rotating Thumb-turn locking system with privacy indicator made from Stainless steel grade 304. Surface finish to be matt type.</li> <li>• Anti-noise rubber padding of thickness 2 mm and width 10 mm</li> <li>• Stainless steel grade 304 screws.</li> </ul>					
<p>Titan Std Series Cubicles: Std-Sizes [W x D x H]: 900 mm x 1550 mm x 1980 mm/2039 mm ( Height is including 150 mm gap from bottom) Door Size- 600 mm</p>		NOS			

# BOQ - ZMS SS Series

Toilet Cubicles & Associated works	Qty	UNIT	RATE	AMT	COLOUR
				C1-	C2-
<p><b>Scope of Work</b></p> <p>Supply and installation of Besco by Merino ZMS (SS) series cubicles of width and depth as per specifications/site drawings. Cubicle height to be 2003 mm.</p>					
<p><b>ITEM DESCRIPTION</b></p> <p>Made from solid grade compact high pressure laminate as per IS:2046 and EN438- manufactured under high specific pressure &gt; 5 MPa and temperature &gt;°120C with bunch of kraft papers impregnated with thermosetting phenolic resin and decorative papers made of Alpha cellulose fiber impregnated with thermosetting melamine resin which provide superior scratch, abrasion, heat, chemical, impact, graffiti &amp; moisture resistance along with anti-bacterial properties. Panels have a black core that when machined, presents a distinctive black edge.</p>					
<p><b>Doors:</b></p> <p>All doors will be of single colour and made of 12 mm thick Merino HPL compact panel. The doors will have chamfered edges. Each door will be supported by 3 stainless steel made hinges affixed to the pilasters. Stainless steel made coat hook and lock set are provided with each door.</p>					
<p><b>Pilasters:</b></p> <p>All pilasters will be made of 12 mm thick Merino HPL compact panel with chamfered edge and completed with stainless steel made thumb turn lock set. Aluminum made door stopper profiles with rubber linings for dampening the noise while door closing will be provided at the vertical ends of the pilasters. Pilasters will be anchored to the floor using stainless steel made adjustable legs . The bottom gap is 150-100 mm.</p>					
<p><b>Dividers:</b></p> <p style="text-align: center;">BOQ - TITAN 12MM BOX UP SERIES</p> <p>All intermediate partitions or dividers will be made of 12 mm thick Merino HPL compact laminate panels. They are affixed with stainless steel made U-channel at their ends for ultimate stability of the system.</p> <p>Design no. as specified by Arch. / Engr. in suede finish. Size of panels to be as per drawing.</p>					
<p><b>HARDWARE &amp; ACCESSORIES</b></p> <ul style="list-style-type: none"> <li>Semi-spherical (Top) head frame structure for surface protection. Size to be 50x32x1.6T. Corner joinery section, Size to be 40x16.5x1.8T. U-Channel Wall joinery section,Size to be 22x16x1.6T. Door stopper section, Size to be 21x12.5x1.6T.</li> <li>Adjustable Palm Design Pedestal Footing of base diameter 64 mm made from Stainless steel grade 316 giving a clearance height of 150 mm. Surface finish to be matt type.</li> <li>Spring loaded Butt Hinges made from Stainless steel grade 304. Surface finish to be matt type. Covers to be lacor coated.</li> <li>Coat hook with rubber stopper made from Stainless steel grade 304. Surface finish to be matt type.</li> <li>Round Door knob diameter 30 mm with grooves for better hand grip made from Stainless steel grade 304. Surface finish to be matt type.</li> <li>Rotating Thumb-turn locking system with privacy indicator made from Stainless steel grade 304. Surface finish to be matt type.</li> <li>Stainless steel grade 304 screws.</li> <li>Anti-rotation Nylon polyamide grade6- expandable wall plugs.</li> <li>The Work shall complete as per drawing , under supervision of engineer in charge and company experts</li> <li>Extruded grade aluminium alloy and epoxy powder coated (color as per specifications):-</li> </ul>					
<p>ZMS SSSeries Cubicles: Std Sizes W x D x H): 900 mm x 1550 mm x 2003 mm, (Height is including 150 mm gap from bottom) Door Width- 600 mm</p>		NOS			

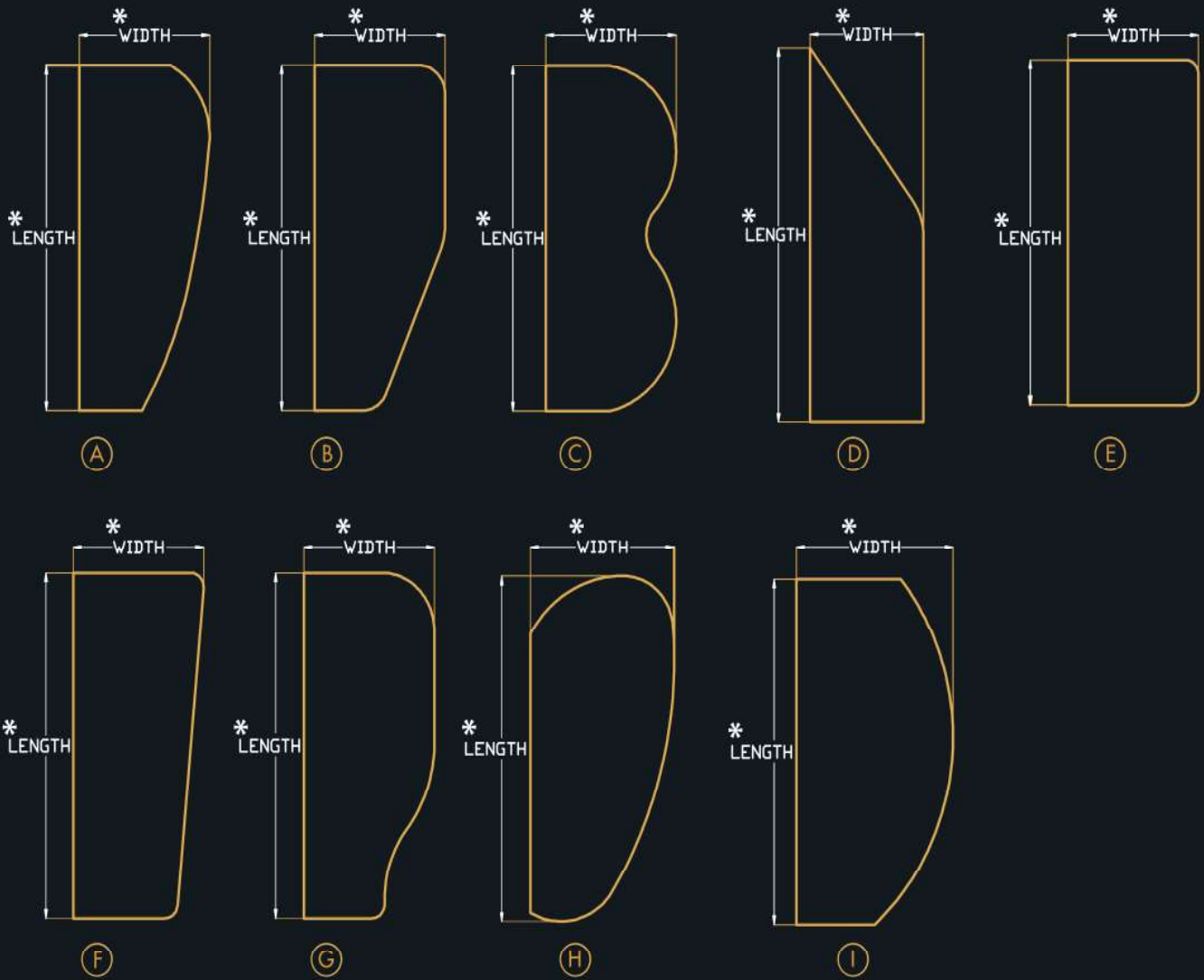
# BOQ - ZMS Nylon Series

Toilet Cubicles & Associated works	Qty	UNIT	RATE	AMT	COLOUR
				C1-	C2-
<p><b>Scope of Work</b></p> <p>Supply and installation of Merino Besco ZMS (Nylon) series cubicles of width and depth as per specifications/ site drawings. Cubicle height will be 2003 mm.</p>					
<p><b>ITEM DESCRIPTION</b></p> <p>Made from solid grade compact high pressure laminate as per IS:2046 and EN438- manufactured under high specific pressure &gt; 5 MPa and temperature &gt;°120C with bunch of kraft papers impregnated with thermosetting phenolic resin and decorative papers made of Alpha cellulose fiber impregnated with thermosetting melamine resin which provide superior scratch, abrasion, heat, chemical, impact, graffiti &amp; moisture resistance along with anti-bacterial properties. Panels have a black core that when machined, presents a distinctive black edge.</p>					
<p><b>Doors:</b></p> <p>All doors will be of single colour and made of 12 mm thick Merino HPL compact panel. The doors will have chamfered edges. Each door will be supported by 3 no.s Nylon PA6- made hinges affixed to the pilasters. Nylon PA6- made coat hook and lock set are provided with each door.</p>					
<p><b>Pilasters:</b></p> <p>All pilasters will be made of 12 mm thick Merino HPL compact panel with chamfered edge and completed with stainless steel made thumb turn lock set. Aluminum made door stopper profiles with rubber linings for dampening the noise while door closing will be provided at the vertical ends of the pilasters. Pilasters will be anchored to the floor using Nylon PA6- made adjustable legs .The bottom gap is 150-100 mm.</p>					
<p><b>Dividers:</b></p> <p>All intermediate partitions or dividers will be made of 12 mm thick Merino HPL compact laminate panels. They are affixed with aluminium made U-channel at their ends for ultimate stability of the system.</p> <p>Design no. as specified by Arch. / Engr. in suede finish. Size of panels to be as per drawing.</p>					
<p><b>HARDWARE &amp; ACCESSORIES</b></p> <ul style="list-style-type: none"> <li>Semi-spherical (Top) head frame structure for surface protection. Size to be 50x32x1.6T. Corner joinery section, Size to be 40x16.5x1.8T.U-Channel Wall joinery section, Size to be 22x16x1.6T.Door stopper section, Size to be 21x12.5x1.6T.</li> <li>Nylon Polyamide grade6- Adjustable Pedestal Footing of base minimum diameter 70 mm, giving a clearance height of 150mm.</li> <li>Self closing Hinges (Gravity mechanism) made from Nylon Polyamide grade6-. Color to be as per specifications.</li> <li>Round Coat hook with base diameter 53 mm made from Nylon polyamide grade6-. Color to be as per specifications.</li> <li>Round Door knob diameter 48 mm with thumb-recess made from Nylon polyamide grade6-. Color to be as per specifications.</li> <li>Rotating Thumb-turn locking system with privacy indicator locking system made from Nylon polyamide grade6-. Color to be as per specifications.</li> <li>Anti-noise rubber padding.</li> <li>Stainless steel grade 304 screws.</li> <li>Anti-rotation Nylon polyamide grade6- expandable wall plugs.</li> <li>The Work shall complete as per drawing , under supervision of engineer in charge and company experts</li> </ul>					
<p>ZMSSeries Cubicles: Std Sizes (W x D x H): 900 mm x 1550 mm x 2003 mm, (Height is including 150 mm gap from bottom) Door Width- 600 mm</p>		NOS			

# BOQ - PD Door

Toilet Cubicles & Associated works	Qty	UNIT	RATE	AMT	COLOUR
				C1-	C2-
<p><b>Scope of Work</b></p> <p>Supply and installation of Besco by Merino PD DOOR series cubicles of width and depth as per specifications/ site drawings. PD Door height to be 2100/1980 mm.</p>					
<p><b>ITEM DESCRIPTION</b></p>					
<p><b>Door</b></p> <p>Made from solid grade compact high pressure laminate as per IS:2046 manufactured under high specific pressure &gt; 5 MPa and temperature &gt;°120C with bunch of kraft papers impregnated with thermosetting phenolic resin and decorative papers made of Alpha cellulose fiber impregnated with thermosetting melamine resin which provide superior scratch, abrasion, heat, chemical, impact, graffiti &amp; moisture resistance along with anti-bacterial properties. Panels have a black core that when machined, presents a distinctive black edge. Panel thickness 12 mm. Design no. as specified by Arch. / Engr. in suede finish. Size of panels to be as per drawing.</p>					
<p><b>HARDWARE &amp; ACCESSORIES</b></p> <ul style="list-style-type: none"> <li>Specially designed D-shape wall mounted pole made from extruded grade aluminum alloy 6063/HE9/T6- and epoxy powder coated (color as per specifications) for surface protection. Size to be 46x41x2T.</li> <li>Matching profile and color Nylon Polyamide6- caps to cover aluminum Poles.</li> <li>Self closing Hinges (Gravity mechanism) made from Nylon Polyamide grade6-. Color to be as per specifications.</li> <li>Round Coat hook with base diameter 53 mm made from Nylon polyamide grade6-. Color to be as per specifications.</li> <li>Round Door knob diameter 48 mm with thumb-recess made from Nylon polyamide grade6-. Color to be as per specifications.</li> <li>Latch locking system with privacy indicator made from Nylon polyamide grade6-. Color to be as per specifications.</li> <li>Anti-noise rubber padding.</li> <li>Stainless steel grade 304 screws.</li> <li>Anti-rotation Nylon polyamide grade6- expandable wall plugs.</li> </ul>					
<p>PD Doors Series : Std Sizes (W x H): 2100 mm x 7500 mm (Height is including 150 mm gap from bottom)</p>		NOS			

# Different Shapes of UMP



\*Length = 1200 mm & Width = 450 mm

NOTE: The dimensions shown here are standard dimensions only. However, specialised dimensions are also made on specific requirement.



Aries Imex Trading Inc.



ariesimexmarketing2022



09219102697



[www.ariesimextrading.com](http://www.ariesimextrading.com)



[sales@ariesimextrading.com](mailto:sales@ariesimextrading.com)



09953884201 • 09167043556



Room 306 Zone 027, Madrigal Building,  
286 Escolta St, Binondo, Manila,  
1006 Metro Manila